

# GASSNER.

---

STAINLESS LUXURY IN POOL

# History

1970

Foundation by  
Johann Gassner

1995

New location  
Neuzeug, Autria

1998

Production of  
first stainless steel pool

2005

Enlargement  
production (2. hall)

2004

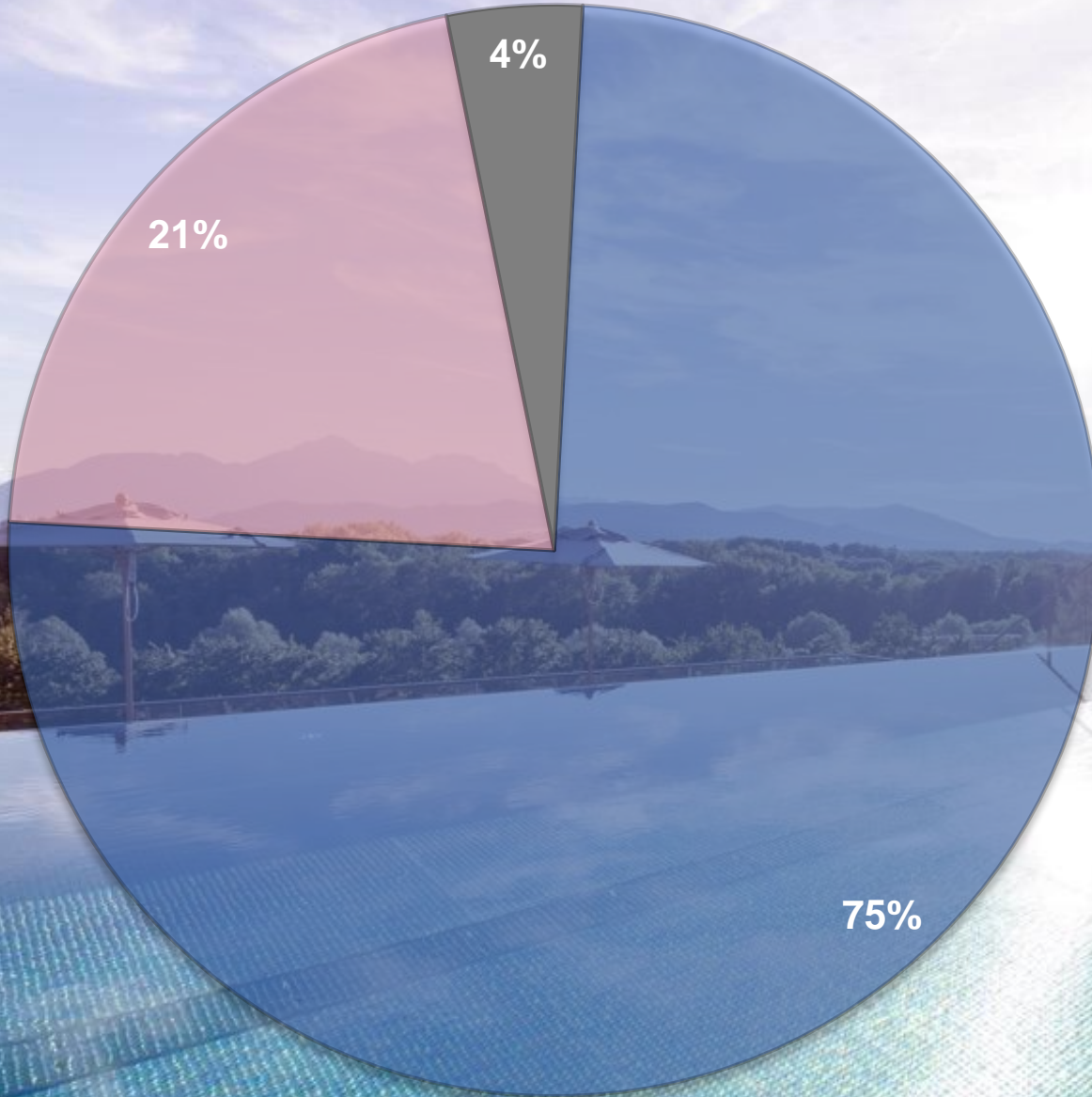
Full-range pool retailer

2022

Takeover by  
 **BWT**



INTERESTING AND  
VARIED COMBINATION OF  
DIFFERENT AREAS,  
THIS MAKES US MORE FLEXIBLE AND  
MUCH MORE INDEPENDENT OF  
SEASONAL FLUCTUATION



■ POOL ■ CONTRACT ■ OTHERS



# WHY GASSNER ?

4-Stern Superior Wellness- und Wohlfühlresort „PETERNHOF“ at Kössen (AT)



## Free-standing pool

- ✓ No need for concrete tub or supporting walls and thus no breakthroughs (interfaces)
- ✓ As standard with 6 cm insulation on floor and walls

## Installation in concrete tub

- ✓ Despite concrete walls, static stiffening of pool-walls, only their load is transmitted to the wall
- ✓ Insulation directly on the pool with glue and holders, therefore hardly any formation of condensate
- ✓ Nice flatness of the walls during and after water filling due to supporting construction





## Skimmerpool

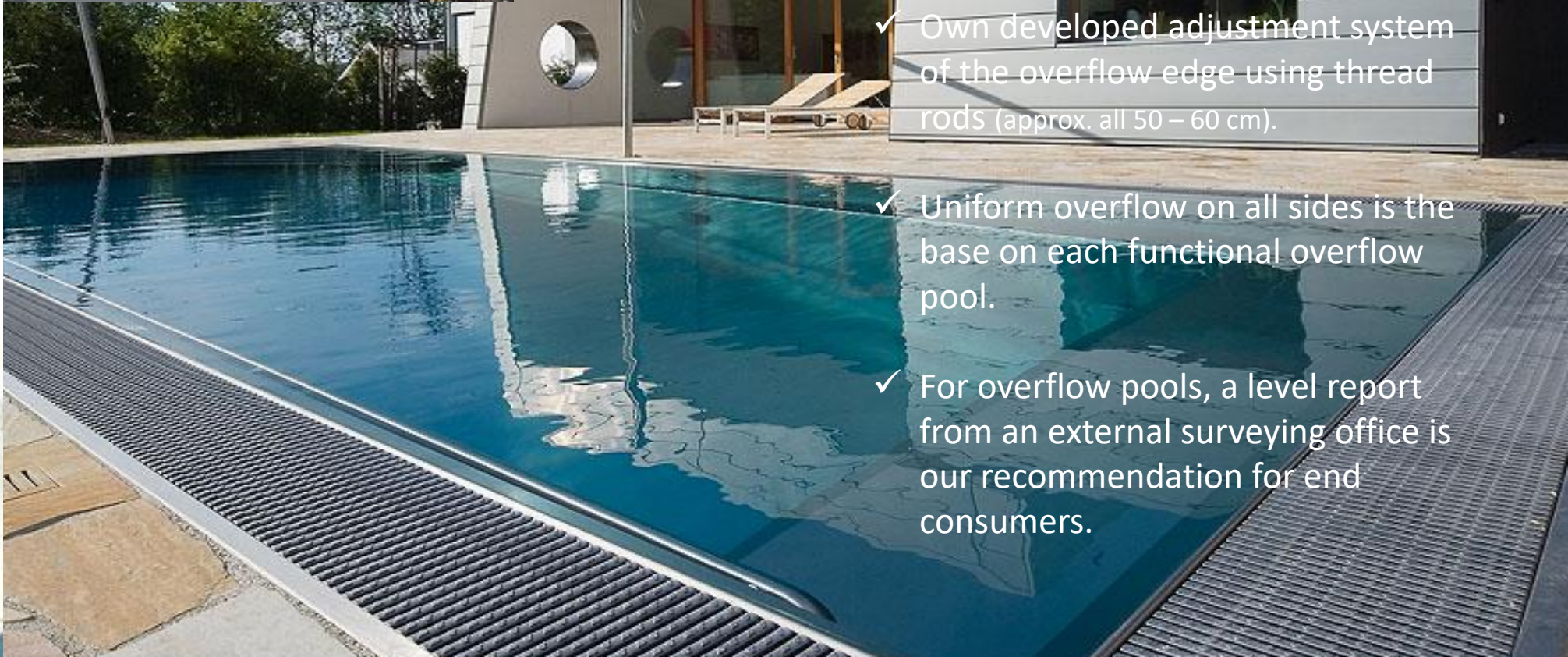
- ✓ Gassner stainless steel skimmer (firmly welded and permanently leak-proof)
- ✓ Unique high water-level of approx. 5 cm (waterline until top edge)  
Skimmer-top edge minus 35 mm – according to shape and floor covering
- ✓ Skimmer-dirt-basket removeable from water side → no revisions
- ✓ Skimmer width 235 mm or 400 mm





## Overflow pool

- ✓ Own developed adjustment system of the overflow edge using thread rods (approx. all 50 – 60 cm).
- ✓ Uniform overflow on all sides is the base on each functional overflow pool.
- ✓ For overflow pools, a level report from an external surveying office is our recommendation for end consumers.





## Nubs

- ✓ Nubs of the pool floor is adapted to the shape of the pool
- ✓ Same distance to walls and stairs
- ✓ All floor parts are including nubs as a standard  
(more nice optic, smaller scratches and welding lines are getting less visible)
- ✓ Nubs are according to standards and guarantee best possible safety for not slipping



## Round transition

- ✓ Between floor and wall → better flow in terms of dirt or deposits, no chance to settle and forming streaks
- ✓ 100% cleanable transition, additional support for all kind of pool cleaners, which climb up walls through reducing the distance in the non-existing edge of the pool.





stairs flexible and individual

Free-carrying stairs (max. with 60 cm)



Stairs in the corner



Public stairs  
(incl. Step marking and handrail)



Stairs with pool-cover-bench



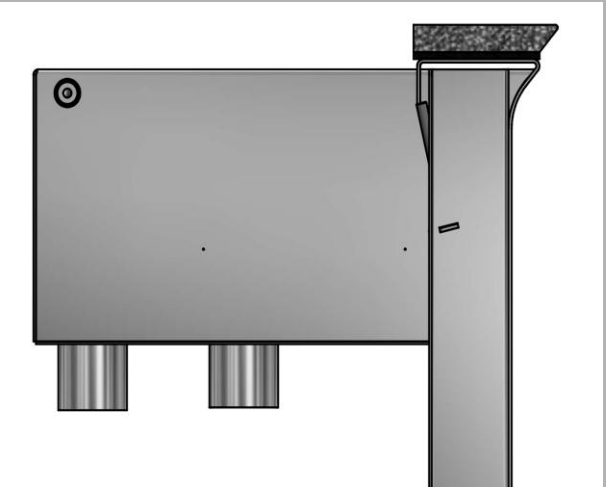
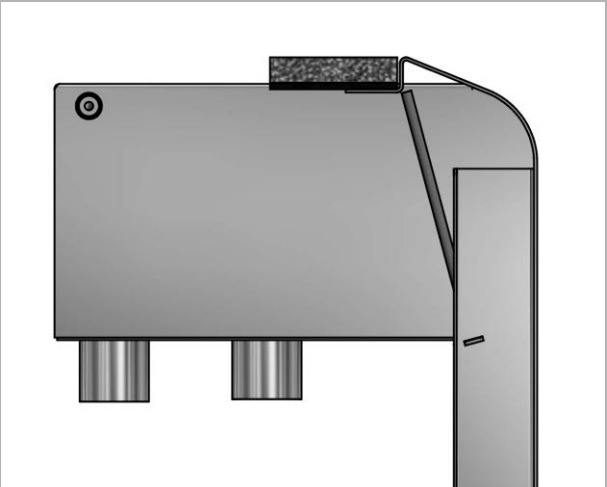
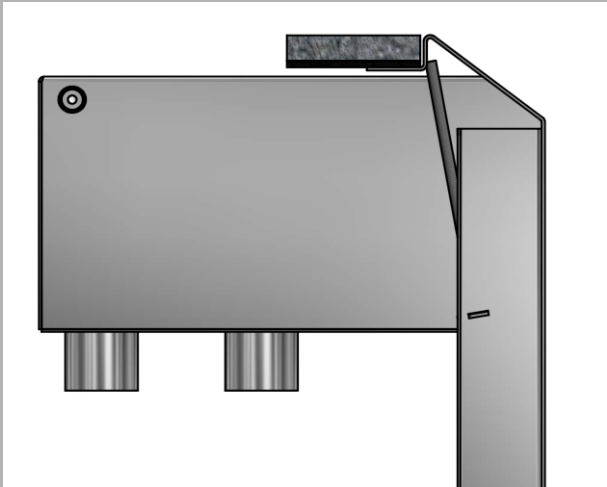
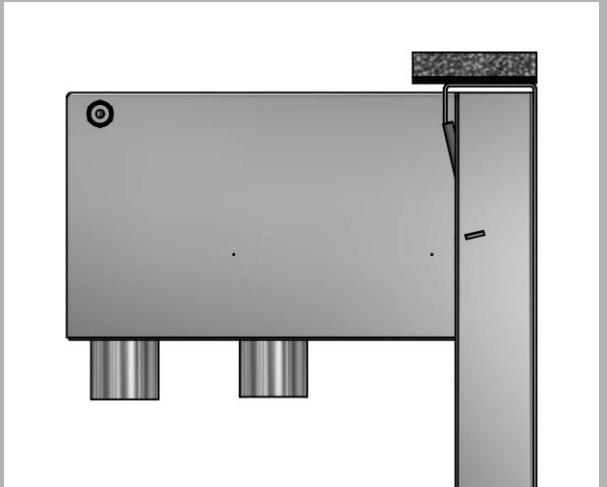
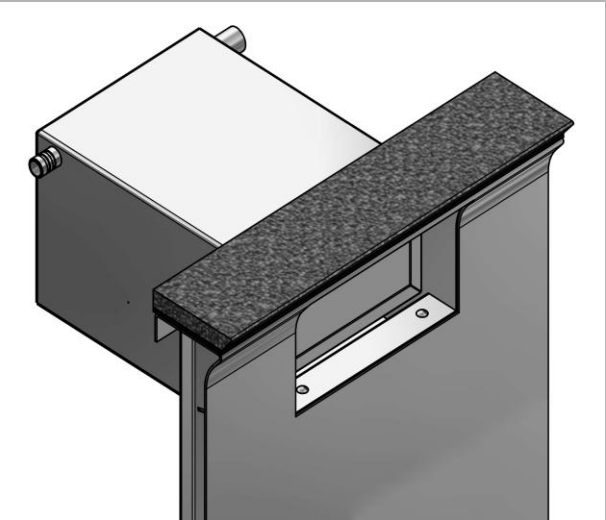
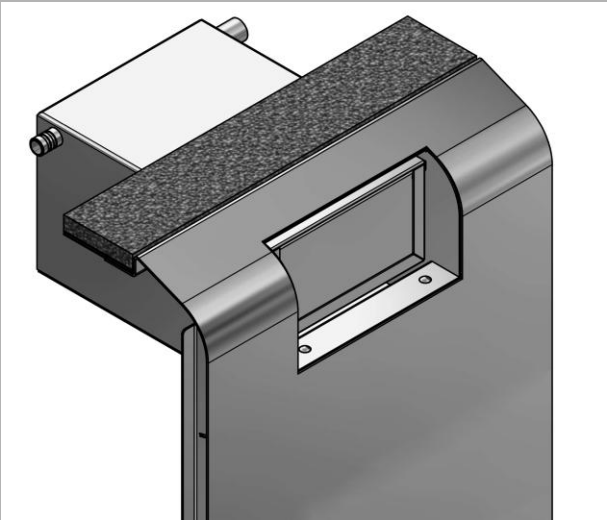
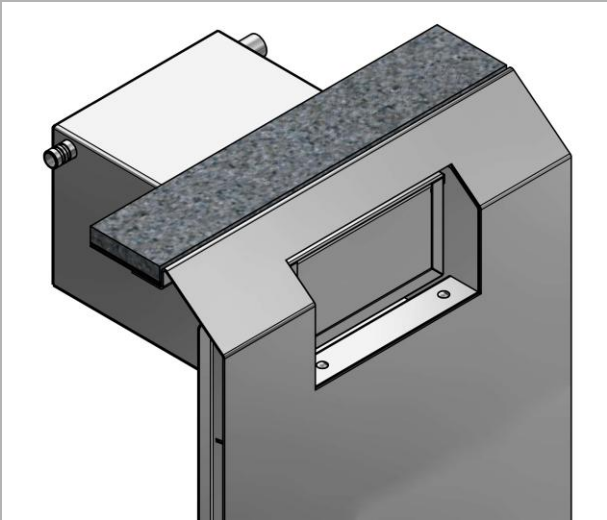
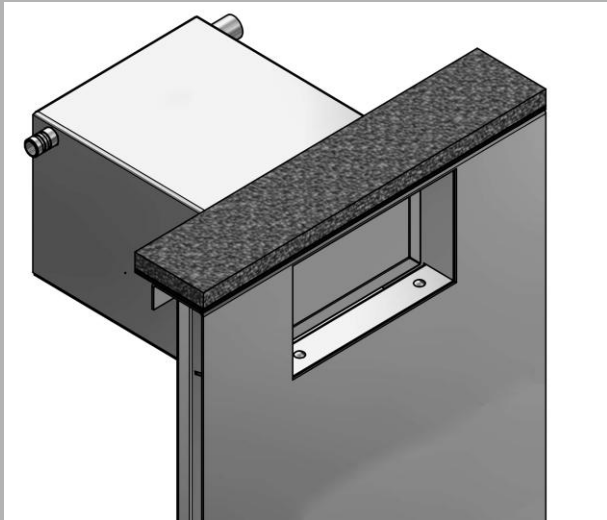
Stairs with podium



Custom made stairs



# Individual ending (Skimmer)



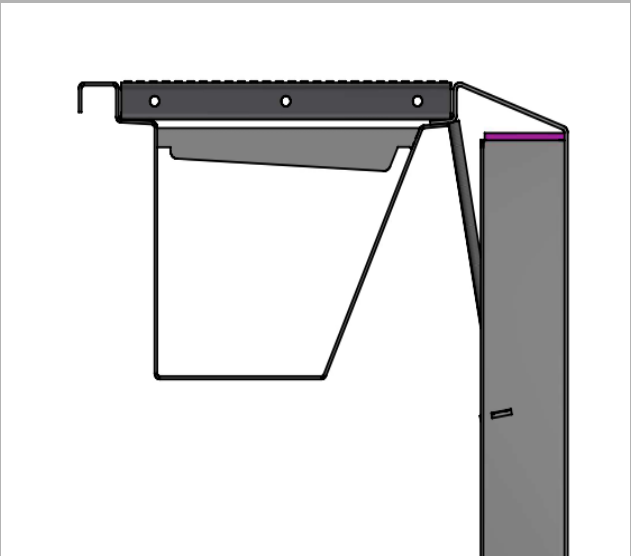
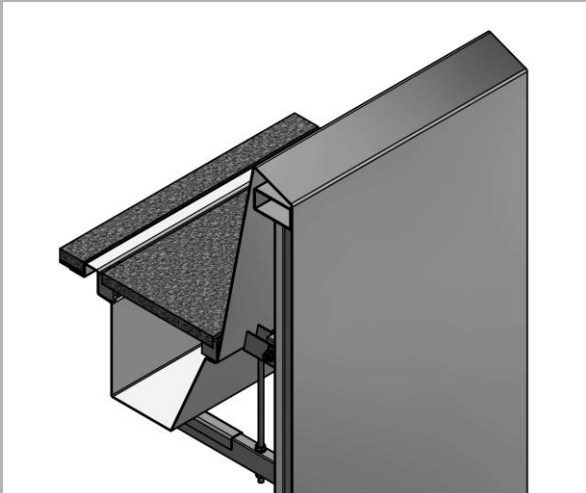
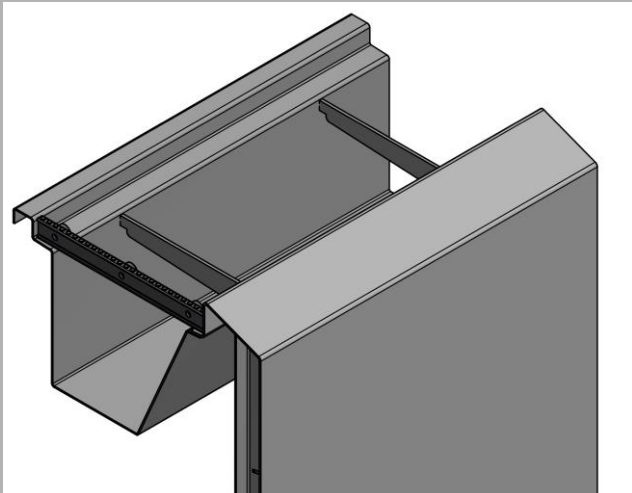
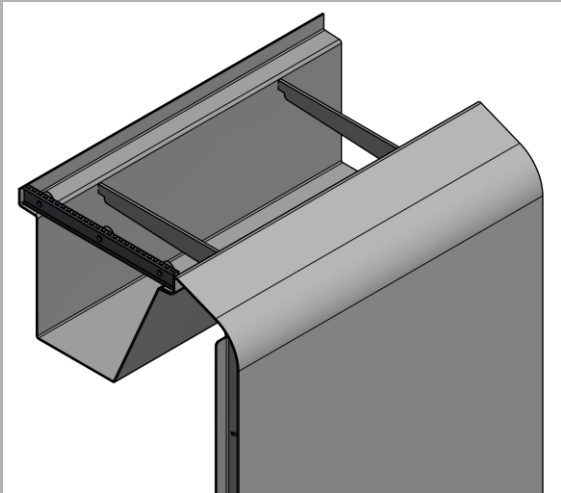
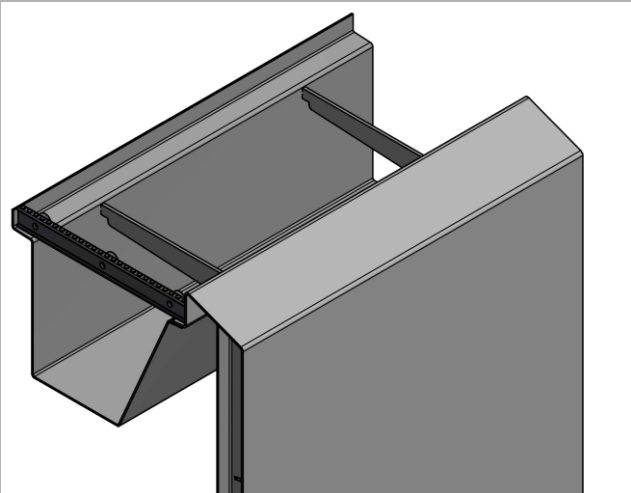
straight  
(floor cover above)

slant  
(floor cover afterwards)

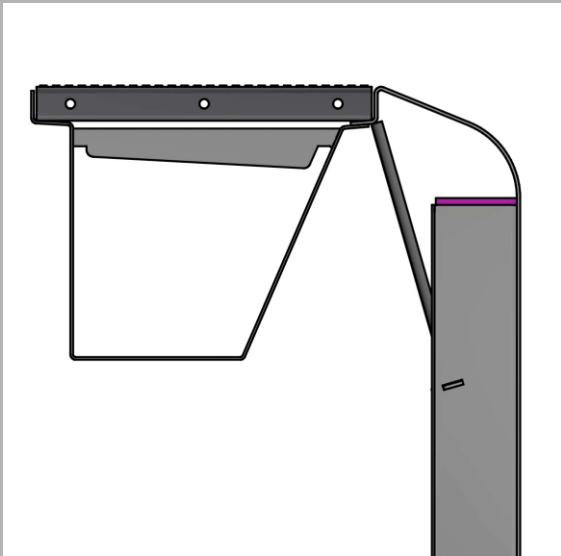
round  
(floor cover afterwards)

Wavereflection  
(floor cover above)

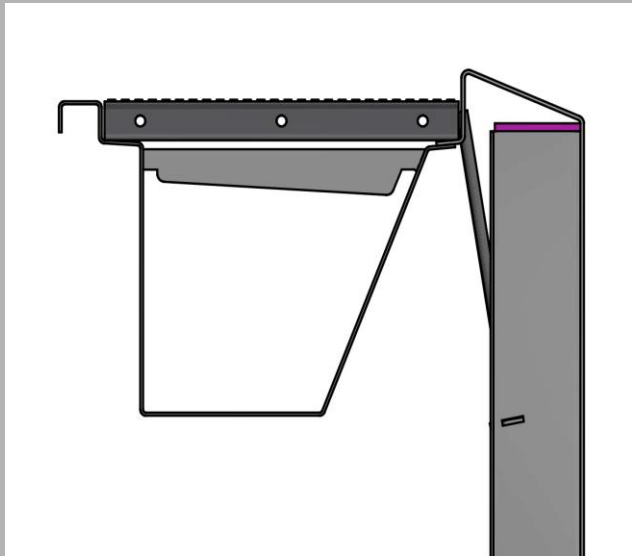
# Individual ending (overflow)



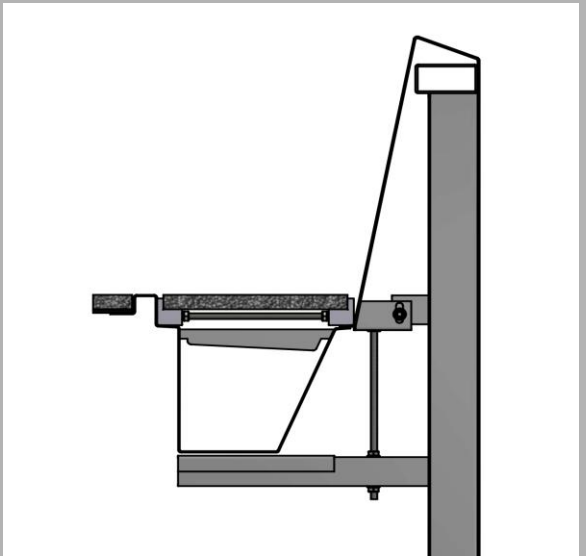
slant



round



slant  
(with grip edge)

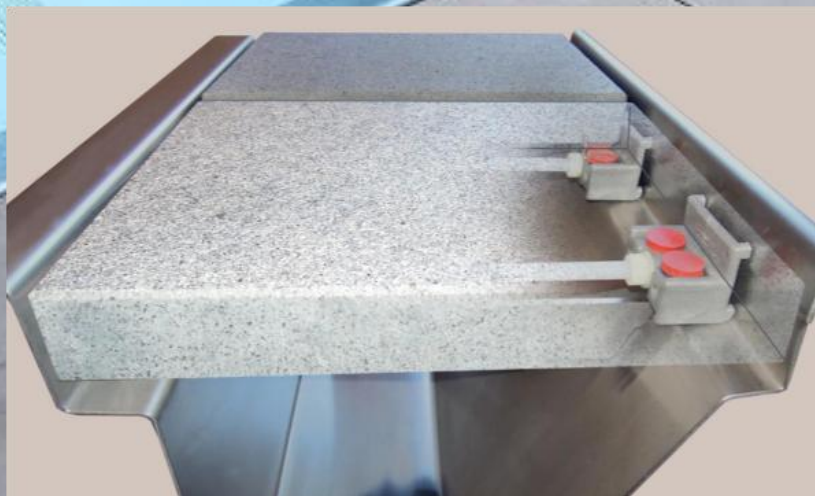
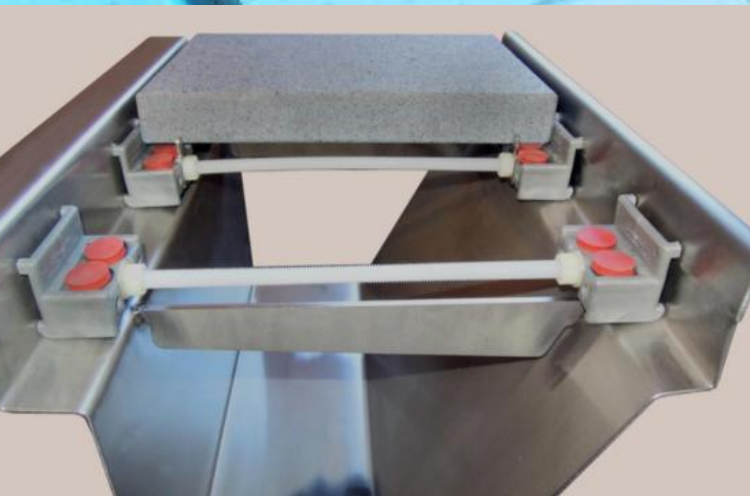


Infinity  
(water curtain)



## Overflow channel covered with stone

- ✓ flexible and individual
- ✓ Minimal punctual support on stainless steel
- ✓ Easy to take out for cleaning
- ✓ holders for permanent and constant, uniform Spaces





## Pool-cover bench (foldable)

- ✓ Easy and also underwater revisable  
(2 secure screws)
- ✓ Front cover without visible screws  
(excluding combination with air-bubbles)
- ✓ Front covers easy to takeout on folded up  
bench

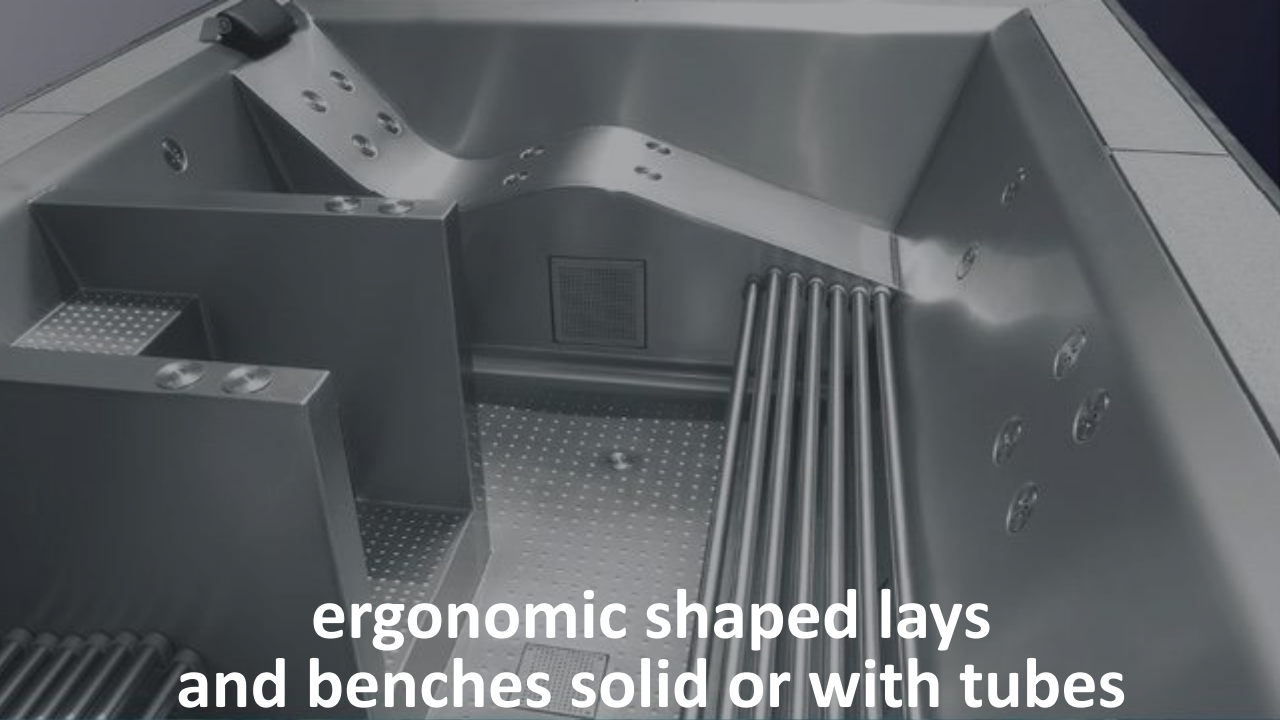




Flush fitting ending in the pool walls of all Gassner built-in components







**ergonomic shaped lays  
and benches solid or with tubes**



**air-bubble nozzle**



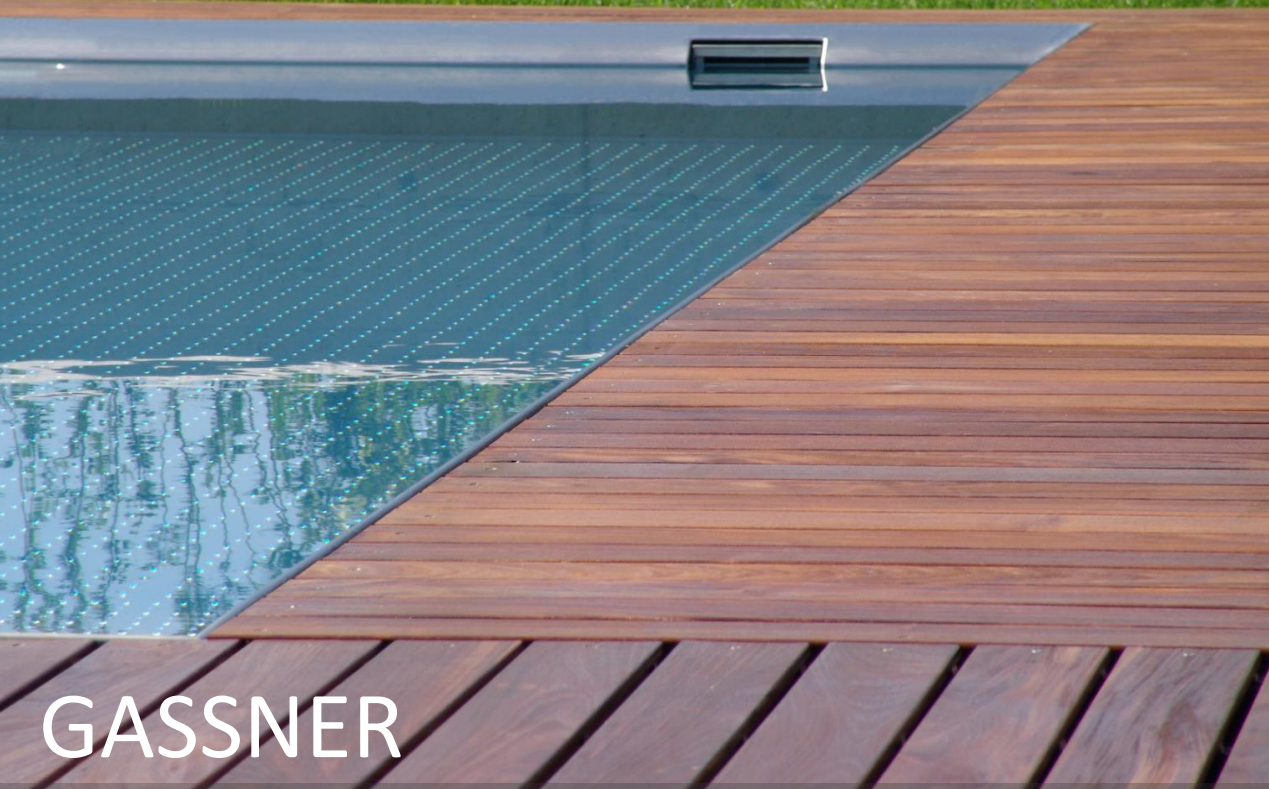
**floor bubbles**



**countercurrent system**



# SEE THE DIFFERENCE



GASSNER

- ✓ Very high water level
- ✓ Skimmer-dirt-basket removeable from water side
- ✓ no revisions on the floor cover outside the pool
- ✓ Different endings, also on skimmer pools



competitors

- ✓ Very low water level in cause of built-in skimmers
- ✓ revisions outside of the pool
- ✓ Top edge ending only with 90° on skimmer pools



# SEE THE DIFFERENCE



GASSNER

- ✓ Pool walls almost without visible welds thanks to sophisticated assembly technology
- ✓ Walls and floor elements are glued together with XPS-Insulation plates (max. flatness).
- ✓ Insulation as standard with 6 cm XPS on floors and walls



competitors

- ✓ No round transition between floor and wall (dirt edge)
- ✓ Welding from the backside of the walls visible through high temperature during welding process

# SEE THE DIFFERENCE

competitors (public pool of Steyr, Austria)

- ✓ Using of ready-nubbed stainless steel sheets
- ✓ No brushed material
- ✓ Partially cut nubs
- ✓ No uniform distances to walls and stairs
- ✓ Sloppy workmanship



# MIRROR POOL.

## BOUNDLESS EXPANSE.

The pool edging, designed with a linear perspective, creates an unprecedented, calm, and smooth reflection of the water's surface, crafting a breathtaking world of relaxation – right in your own garden.

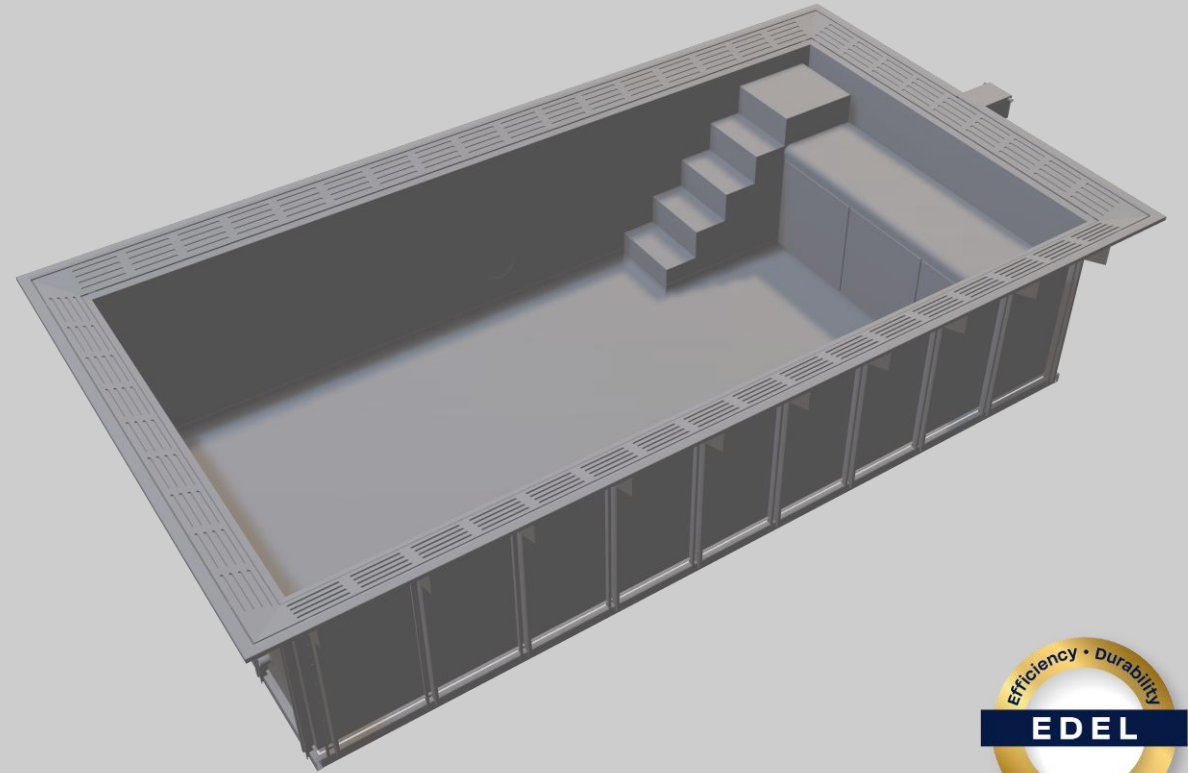
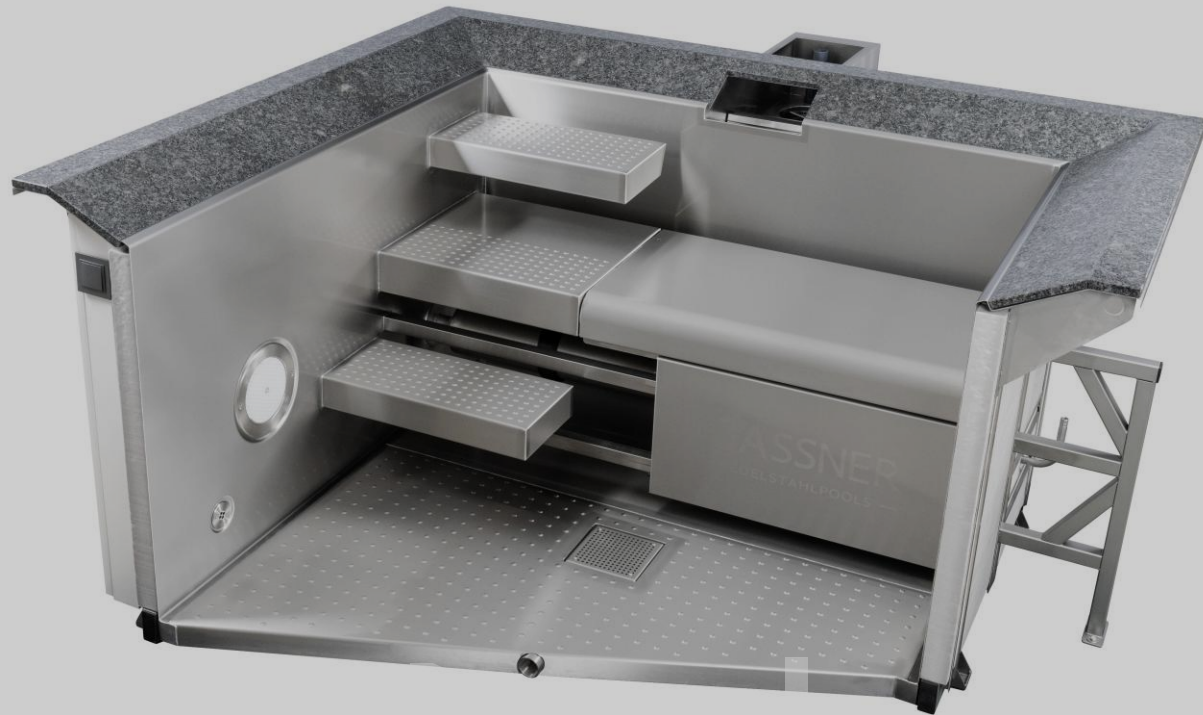
Designed as a one-piece basin, the Mirror Pool impresses with its short construction and delivery time. With a variety of attractive product packages available, each can be customized to meet your individual needs.

CLEAR LINES  
AND COMPLETED  
PERFECTION.





# MIRROR POOL





# MIRROR POOL MODELS

## MIRROR POOL ONE

One-piece basin | Size: 6 × 3 m

- Staircase with platform
- 1x Underwater pool lighting (single color)

## MIRROR POOL ONE PLUS

One-piece basin | Size: 6 × 3 m

- Staircase with platform
- 2x Underwater pool lighting (single color)
- Foldable bench with covers
- Cover preparation

## MIRROR POOL PERFORMANCE

One-piece basin | Size: 7,5 × 3 m

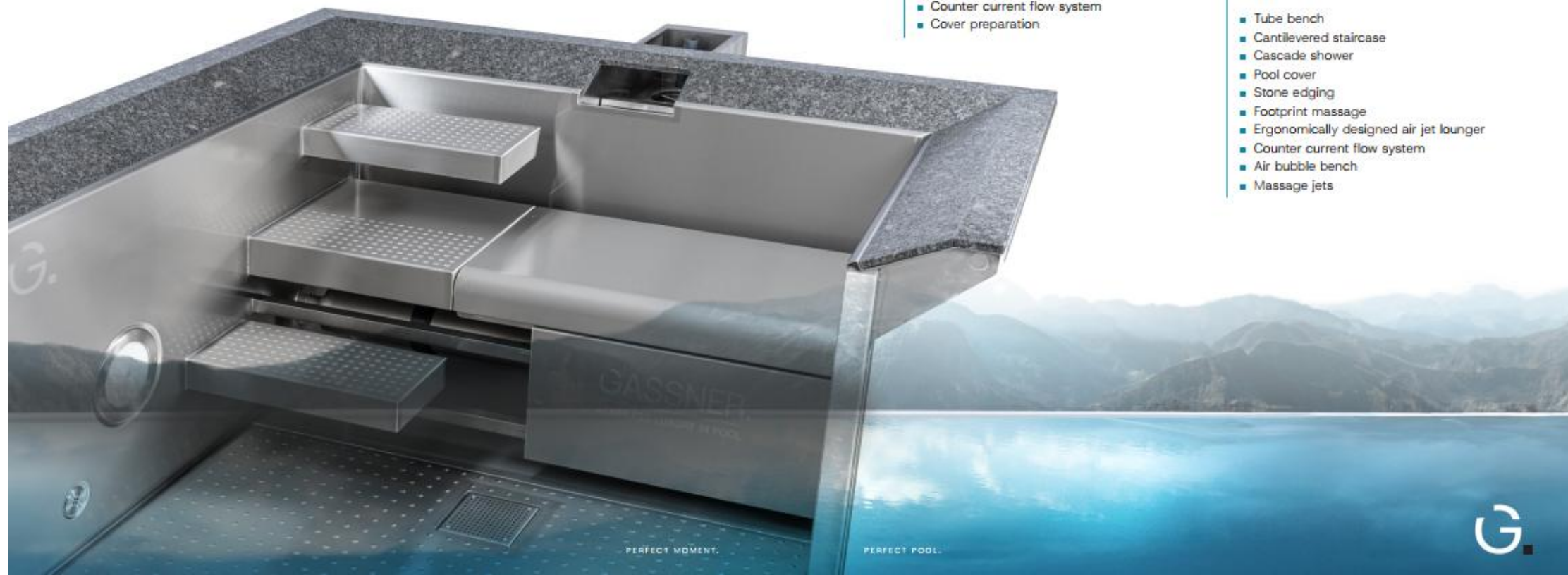
- Cantilevered staircase with platform
- 2x Underwater pool lighting (LED RGB)
- Foldable bench with covers
- Integrated recessed components
- Counter current flow system
- Cover preparation

## MIRROR POOL CUSTOMIZED

The BWT GASSNER Mirror Pool Customized fulfills every desire and can be tailored to your individual dimensions and features.

The following combinable features are available:

- Tube bench
- Cantilevered staircase
- Cascade shower
- Pool cover
- Stone edging
- Footprint massage
- Ergonomically designed air jet lounger
- Counter current flow system
- Air bubble bench
- Massage jets





# ICE MIRROR TUB

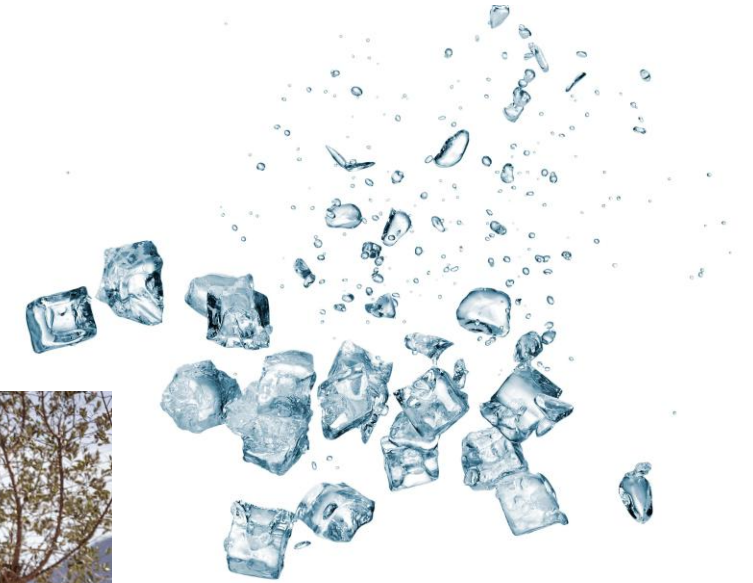


# ICE MIRROR TUB

## ICE BATHING AT THE HIGHEST LEVEL

### ICE MIRROR TUB

- Ergonomically shaped stainless steel body
- Elegant natural stone surround
- Resistant real wood cladding
- High-quality thermal cover
- Advanced water treatment and technology
- Smart control via app
- Made in Austria



### DETAILS

ICE MIRROR TUB without technical box:

- External dimensions: 2000 × 1160 × 670 mm
- Internal dimensions: 1640 × 800 × 560 mm
- Water volume: approx. 400 L
- Empty weight: 250 kg



## Falstaff LIVING DESIGN AWARD - „Innovation Made in Austria“



# falstaff LIVING DESIGN AWARDS 2025





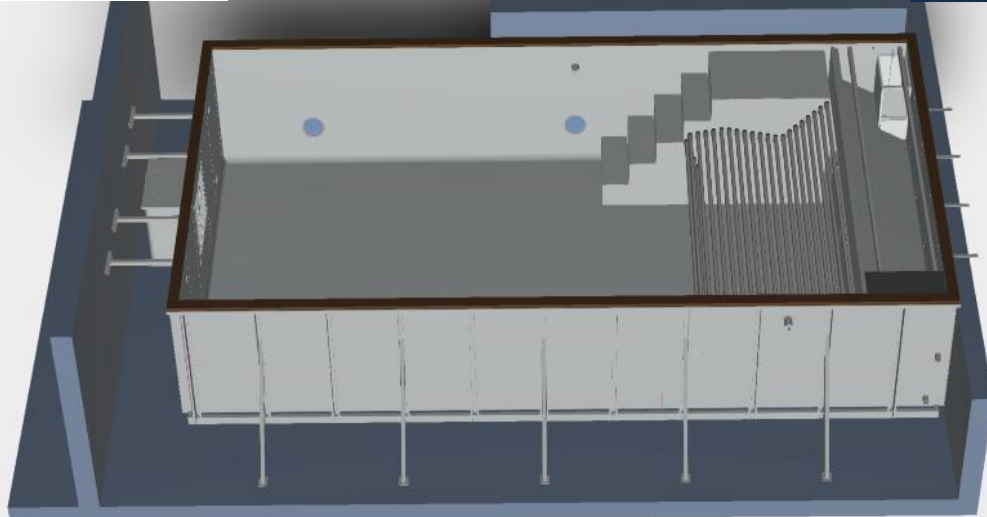




**WKO** Zertifizierter Lehrbetrieb  
Wir bilden **Lehrlinge** aus.



**AUTODESK®  
INVENTOR®**



**FOCUSED  
INNOVATIVE  
MODERN**



**GASSNER** **BWT**  
STAINLESS LUXURY IN POOL



**TRUMPF**



# POOLSYSTEMS ACCORDING TO REQUIREMENT



**PRIVATE**



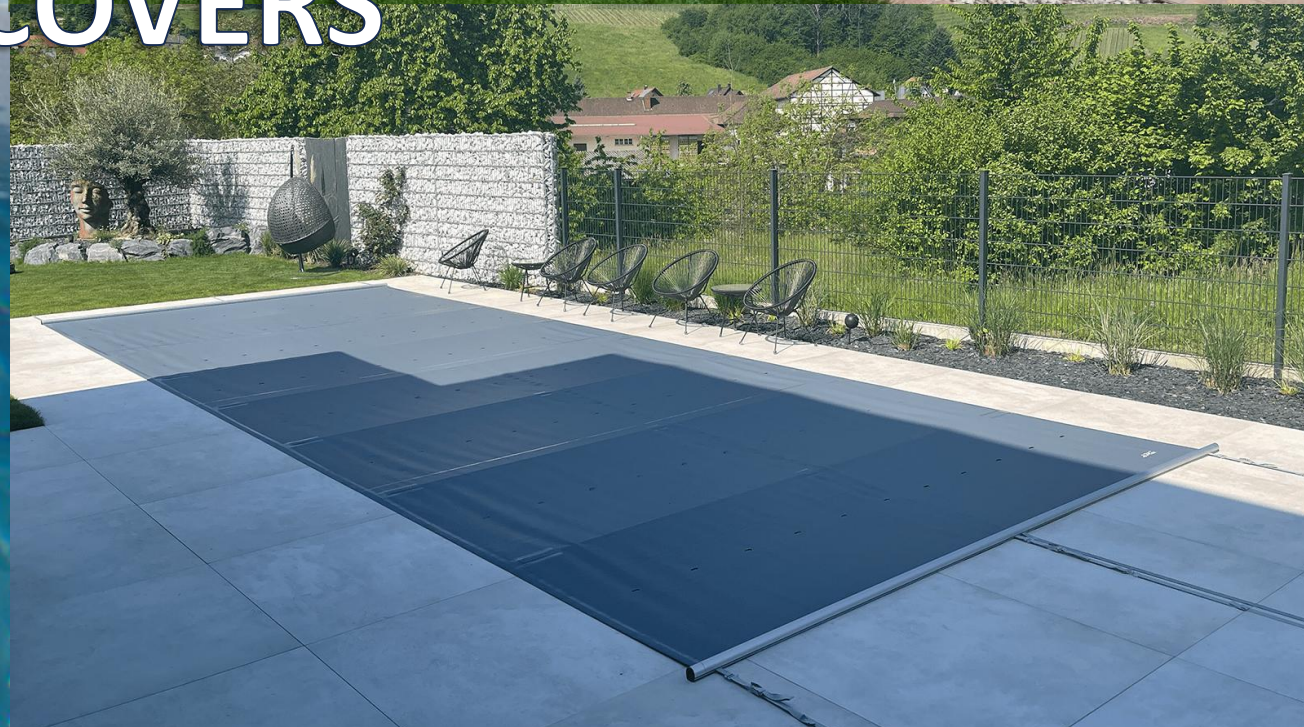
**PUBLIC**





GASSNER  BWT  
STAINLESS LUXURY IN POOL

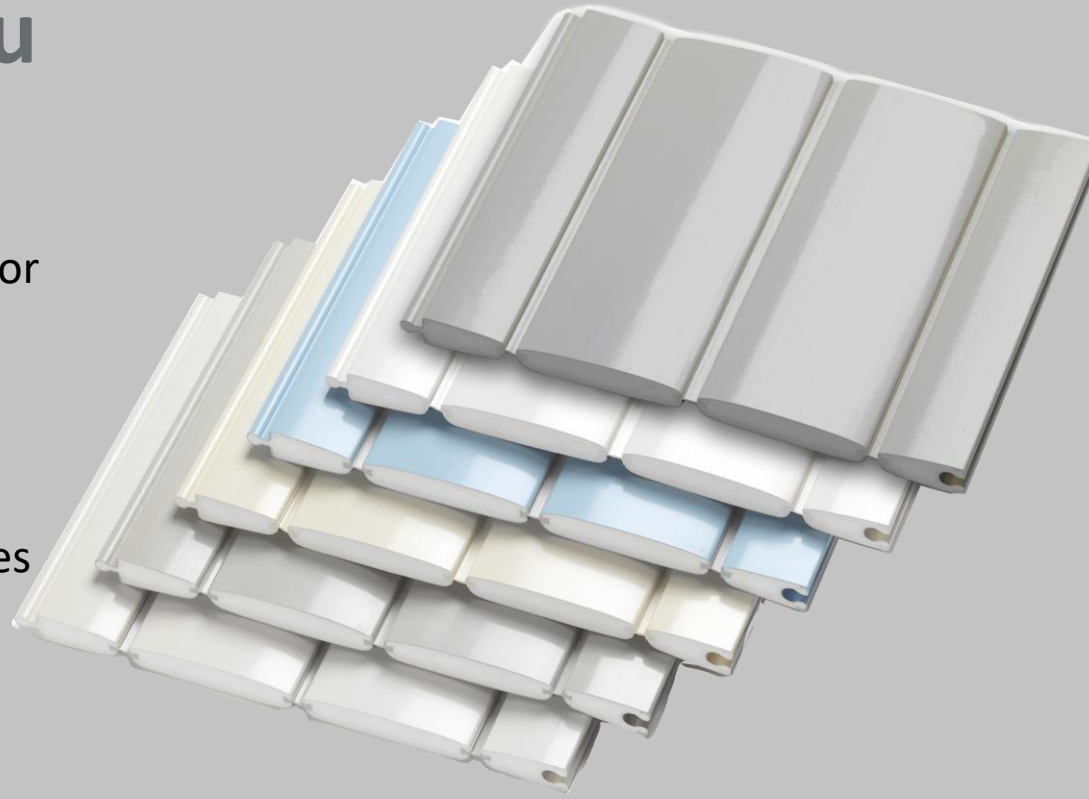
# POOL COVERS





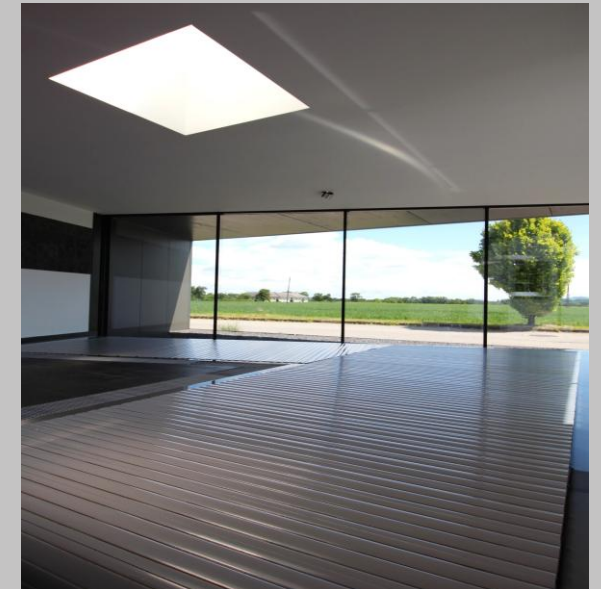
# COVREX by Rehau

- ✓ foamed profile
- ✓ tongue-and-groove connection or PUR hinge (extrusion process)
- ✓ sophisticated design
- ✓ extraordinary material properties
- ✓ Imcomparably easy to clean



- ✓ foamed slats, no hollow chambers and endcaps
- ✓ weather-resistant, therefore all year usable (-20° - +70° C)
- ✓ very high hail resistance
- ✓ Suitable for unusual pool shapes
- ✓ well insulated

- ✓ closed, easy-to-clean surface
- ✓ high storm- & child safety in combination with patented PROTECTION SYSTEM
- ✓ individual cutting of profiles on Installation on site – picture
- ✓ Saving of swimming pool chemistry and heating costs up to 80%







Unique child safety in combination with patented PROTECTION SYSTEM and integrated handrails in the pool



## Protection System

- ✓ Form-fitting screwed plastic half shells
- ✓ Available in the fitting colors to COVREX by Rehau profiles
- ✓ Tensioning using a belt and ground anchor
- ✓ High child and storm safety

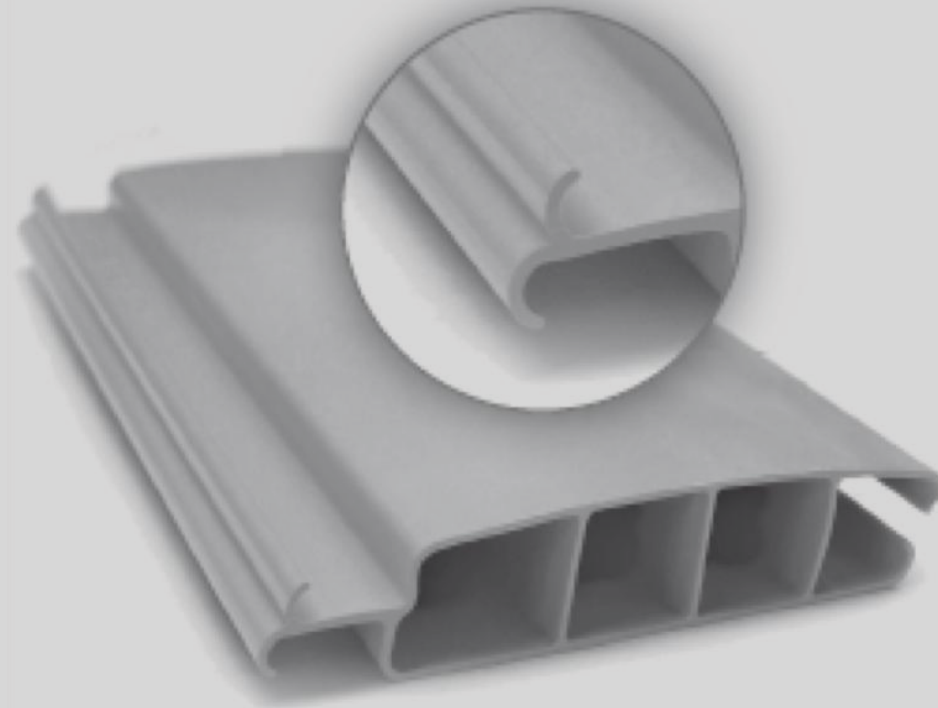




# Hollow chamber profiles of PVC and PC

Hollow chamber profiles made out of PVC or PC are characterized by their sophisticated design, regardless of the material.

Each slat is manufactured using the extrusion process.



Each slat with dimensions of 60 x 14 mm has three hollow chambers and with a double hook system, which lock into each other, which creates a solid pool cover



# Hollow chamber profiles

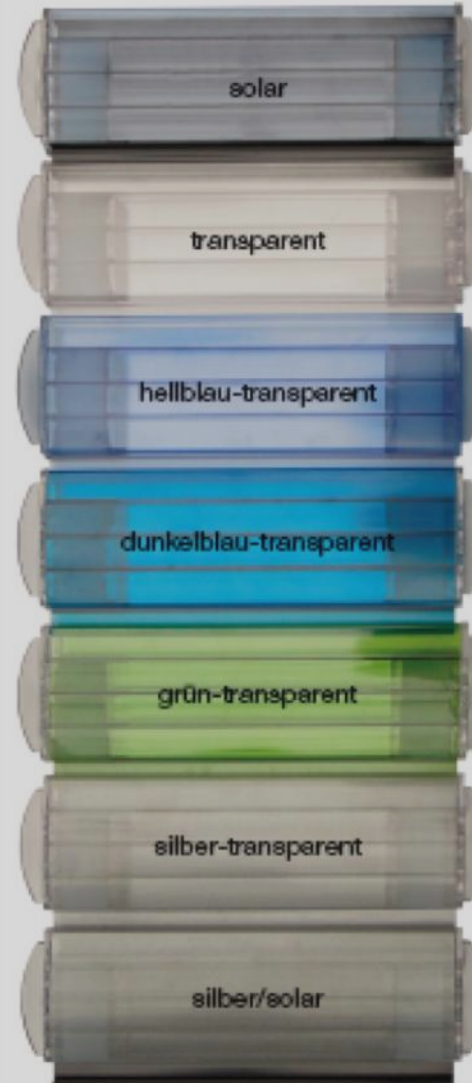
## PVC

- ✓ Cost-effective alternative
- ✓ Proven system for decades
- ✓ In the colors:
  - solar
  - transparent
  - white
  - grey,
  - ivory
  - light blue
  - dark blue



## PC

- ✓ Very impact-resistant
- ✓ Temperature-resistant up to 120°C
- ✓ Largely hail-proof up to grain size 30 mm
- ✓ In the colors:
  - solar
  - transparent,
  - light blue-transparent,
  - dark blue-transparent,
  - green-transparent,
  - silber-transparent,
  - silber-solar







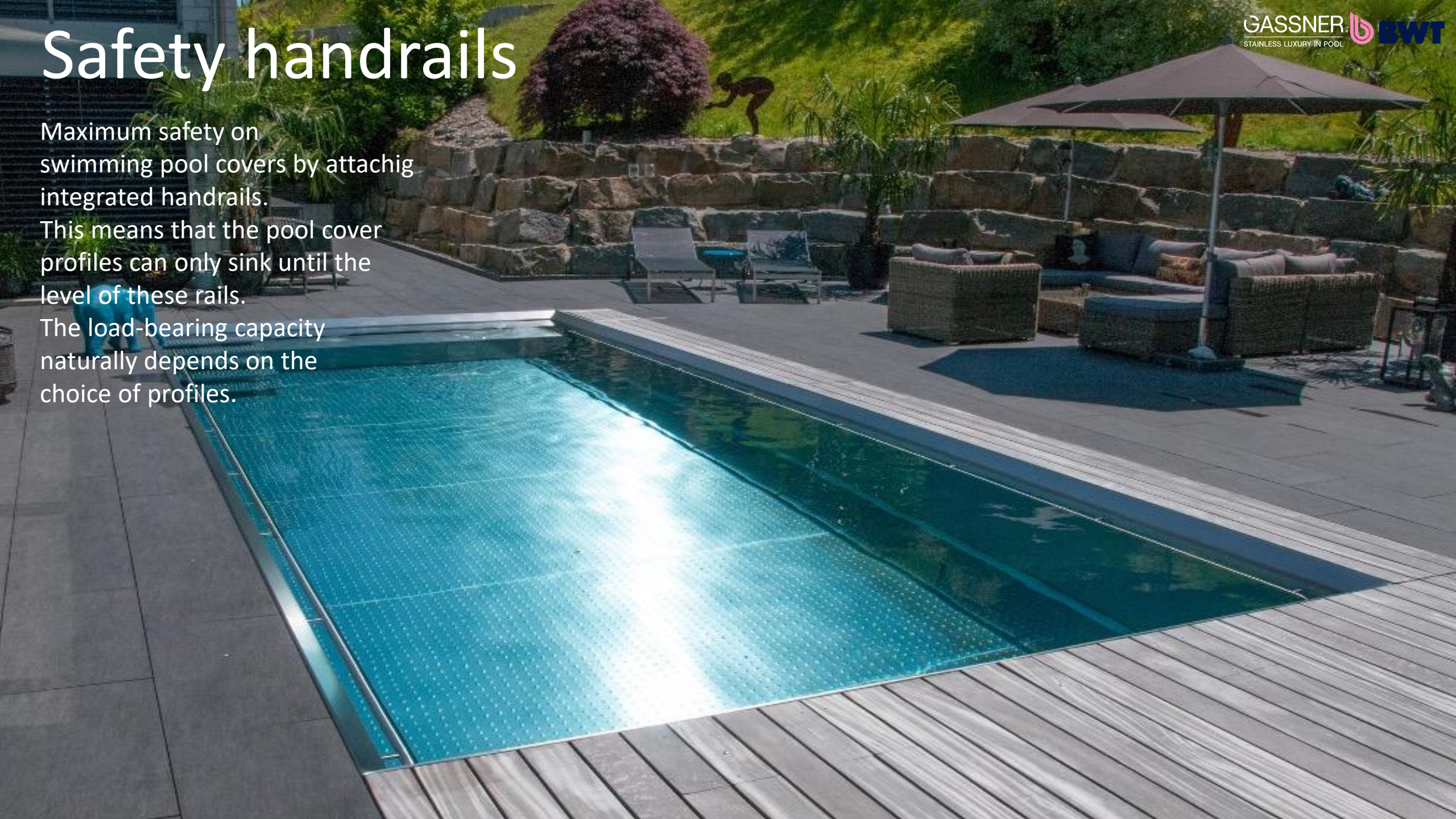


# Safety handrails

Maximum safety on swimming pool covers by attaching integrated handrails.

This means that the pool cover profiles can only sink until the level of these rails.

The load-bearing capacity naturally depends on the choice of profiles.





# Pool enclosures from our partner

GASSNER.  BWT  
STAINLESS LUXURY IN POOL







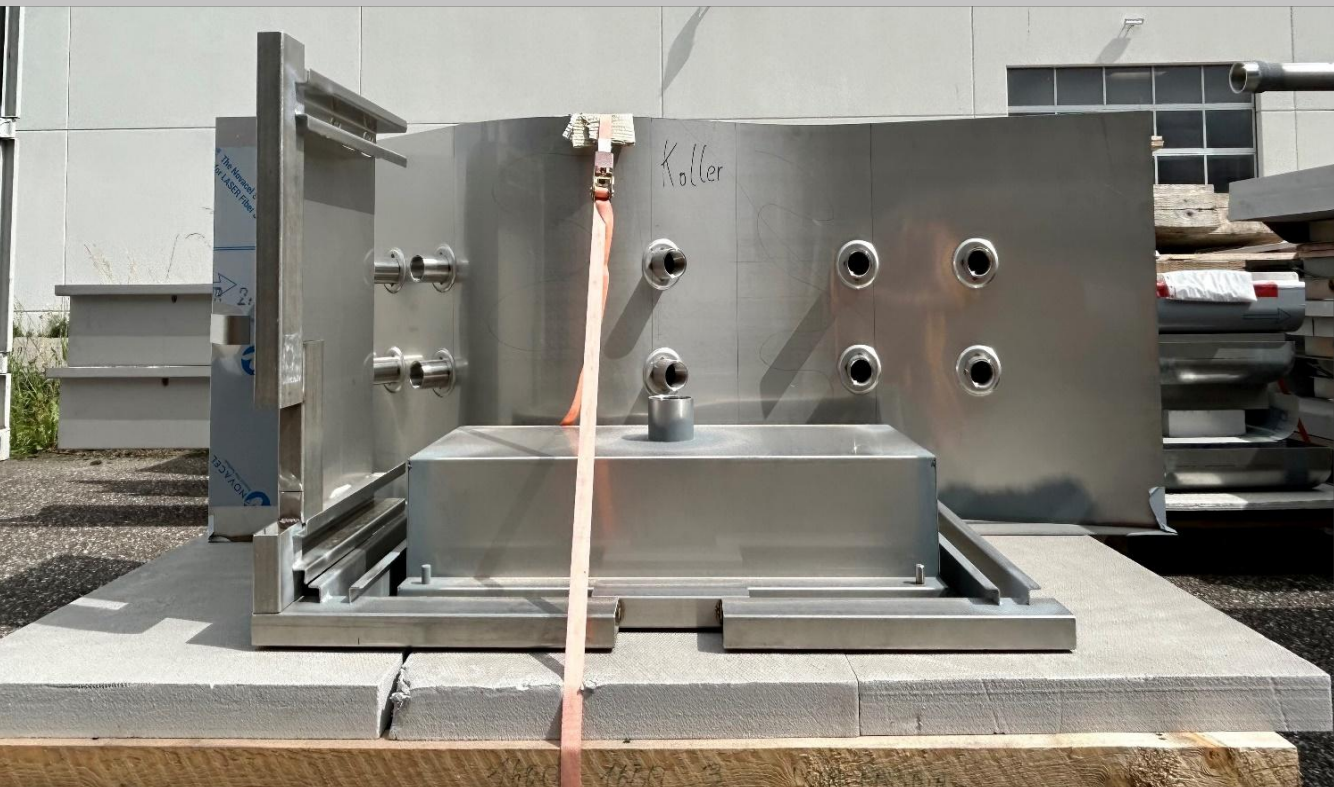
# ONE-PIECE-POOL

- Skimmerpool up to a max inner width of 3,4 m
- Fast installation on site (1-2 working days)





# TRANSPORT IN PARTS



- Extremely high degree of prefabrication (unmatched in the industry)
- Tailored to the situation on site





# POOL MOMENTS PUBLIC























„DAS EDELWEISS“ Salzburg Mountain Resort at Großarl (AT)









# 4-Star Superior Hotel „Juffing & Spa“ at Thiersee (AT)

in cooperation with Schwarzenbacher

GASSNER  BWT   
STAINLESS LUXURY IN POOL





Seegasthof „Hois'n Wirt“ at Gmunden (AT)

























4 Star-Superior Hotel „CORTISEN“ at St. Wolfgang (AT)





„Studio963“ Chalet at Mühlbach/Hochkönig (AT)



GASSNER  BWT  
STAINLESS LUXURY IN POOL











# Hotel „Mein Almhof“ at Nauders/Reschenpass (AT)

in cooperation with Fankhauser



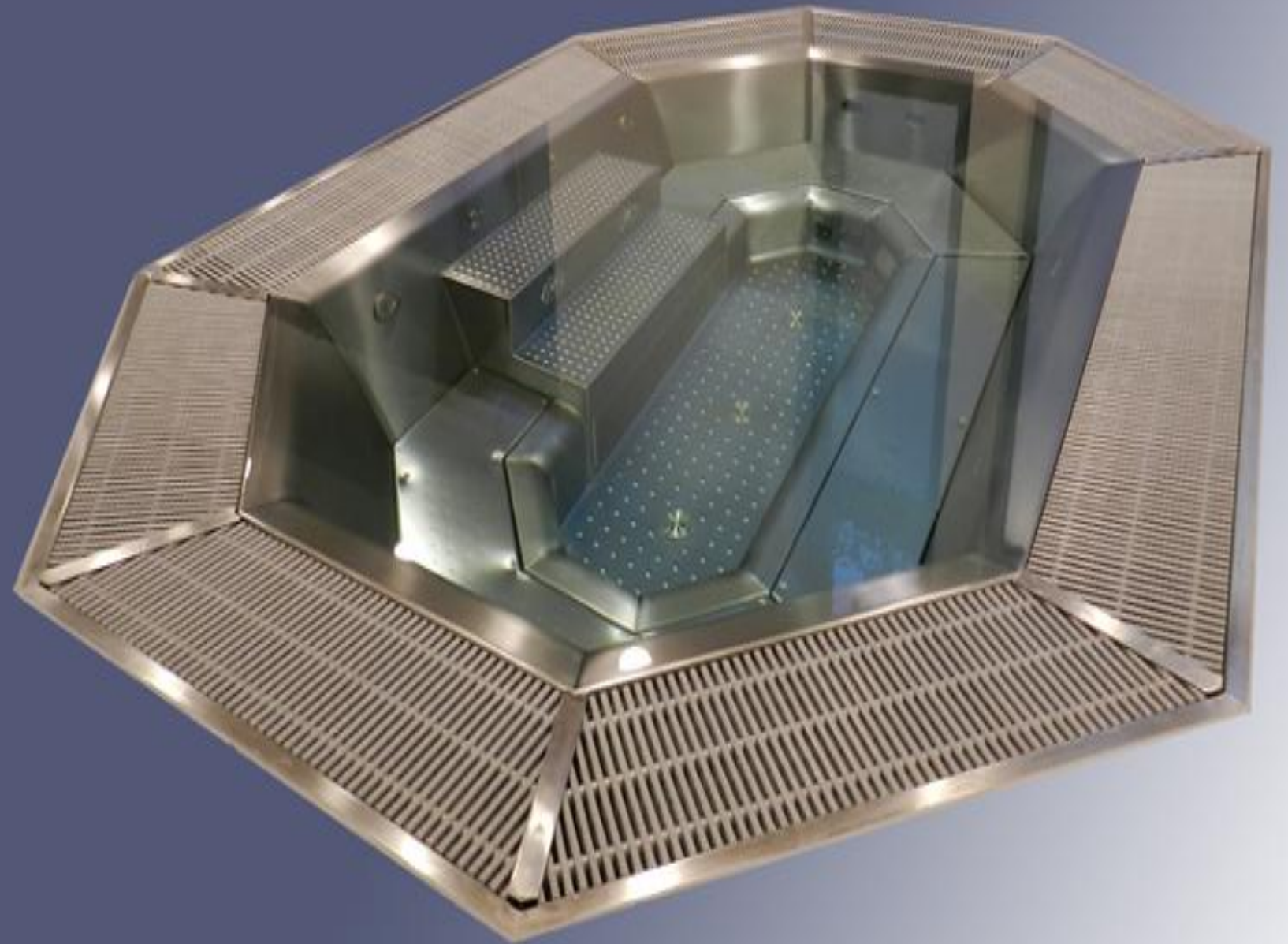


# Fitnessstudio „Elements Siemensallee“ at Munich (DE)

in cooperation with RE-HE Schwimmbadbau



















**Boutique Hotel „Ultima“ at Gstaad (CH)**  
in cooperation with Leader Spa





**Hotel „Das Bachgut – Resort am Berg“ at Hinterglemm (AT)**  
in cooperation with Wieser + Scherrer Zeller Hautechnik



A photograph of four children (two girls and two boys) lying on their stomachs on the edge of a swimming pool, splashing water. They are all wearing sunglasses and smiling. The background is a blurred view of the pool and surrounding area.

# POOL MOMENTS PRIVATE







































Private at Lichtenberg (AT)







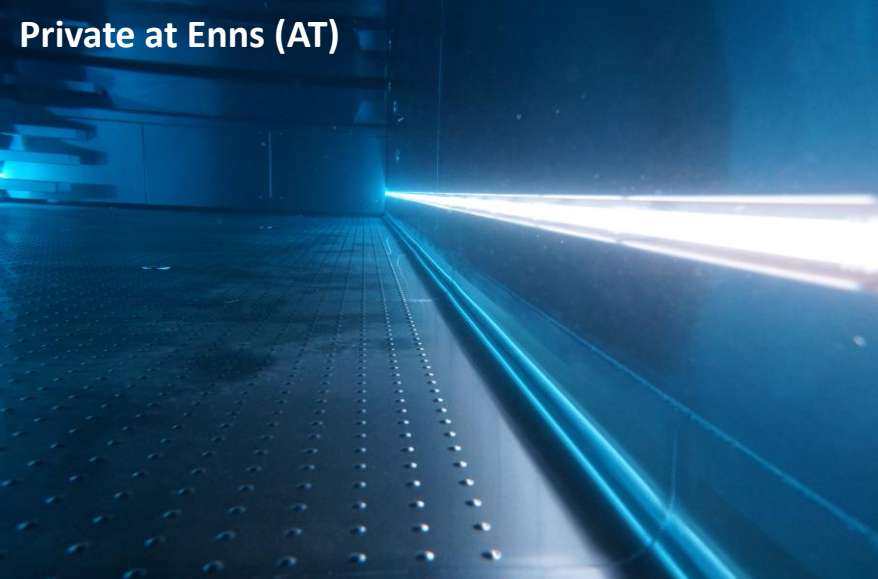








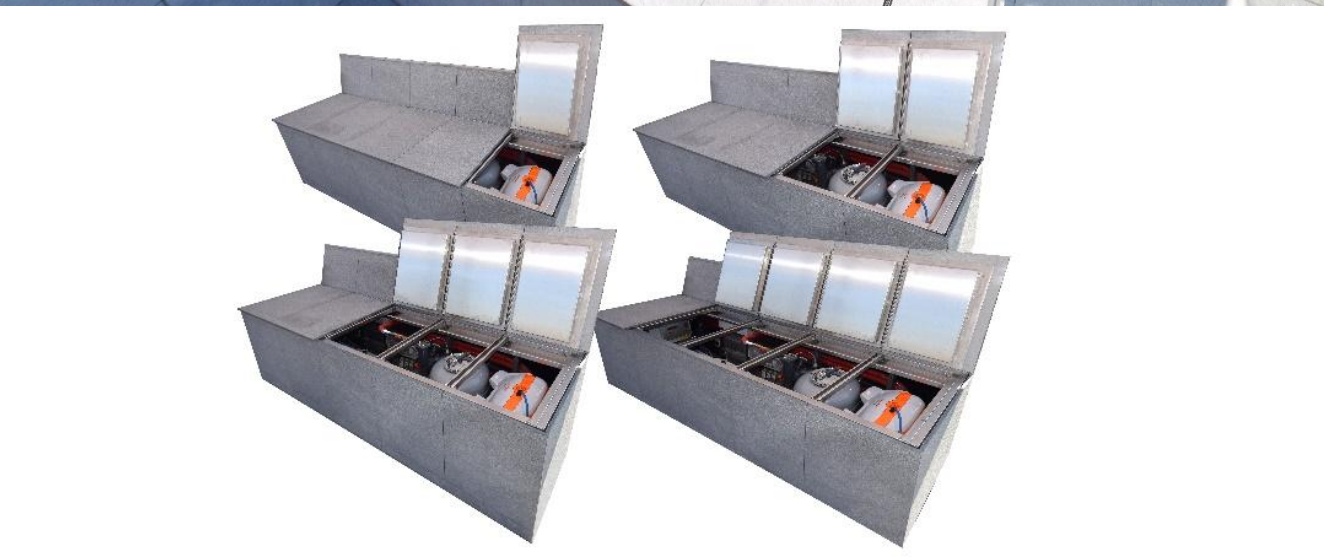










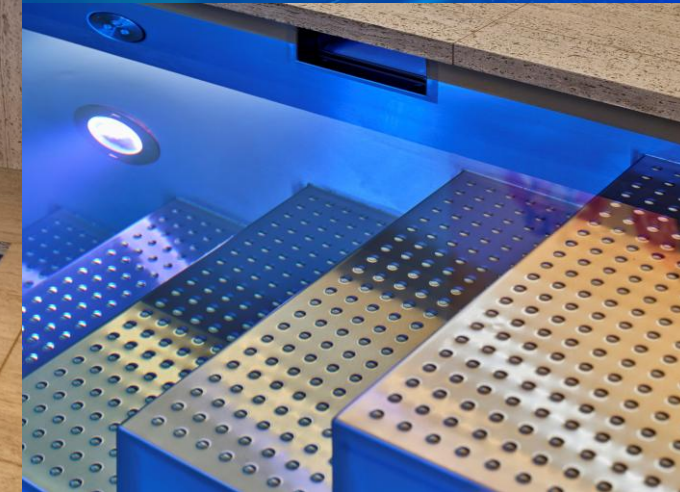




in cooperation with RE-HE Schwimmbadbau

**GASSNER**  
STAINLESS LUXURY IN POOL

 **BWT**









Private (CH)  
in cooperation with Vita Bad

GASSNER.  BWT  
STAINLESS LUXURY IN POOL









Private (CH)

in cooperation with Vita Bad

GASSNER  BWT  
STAINLESS LUXURY IN POOL





Private (CH)

in cooperation with Vivell + Co

GASSNER  BWT  
STAINLESS LUXURY IN POOL

























