



# GASSNER

— EDELSTAHLPOOLS —





# GASSNER

— EDELSTAHLPOOLS —

founded  
by Johann & Hilde  
Gassner  
1970

new factory at the  
current location  
1995

extension of Hall #2  
2005

Management  
Wolfgang Gassner  
2010

acquisition  
by  **BWT**  
2022

tinsmith- & locksmith  
work

facilities & ovens



first  
stainless steel pool  
1998



start contract  
manufacturing - Swarco  
1999

start of installing  
water treatment  
systems 2004

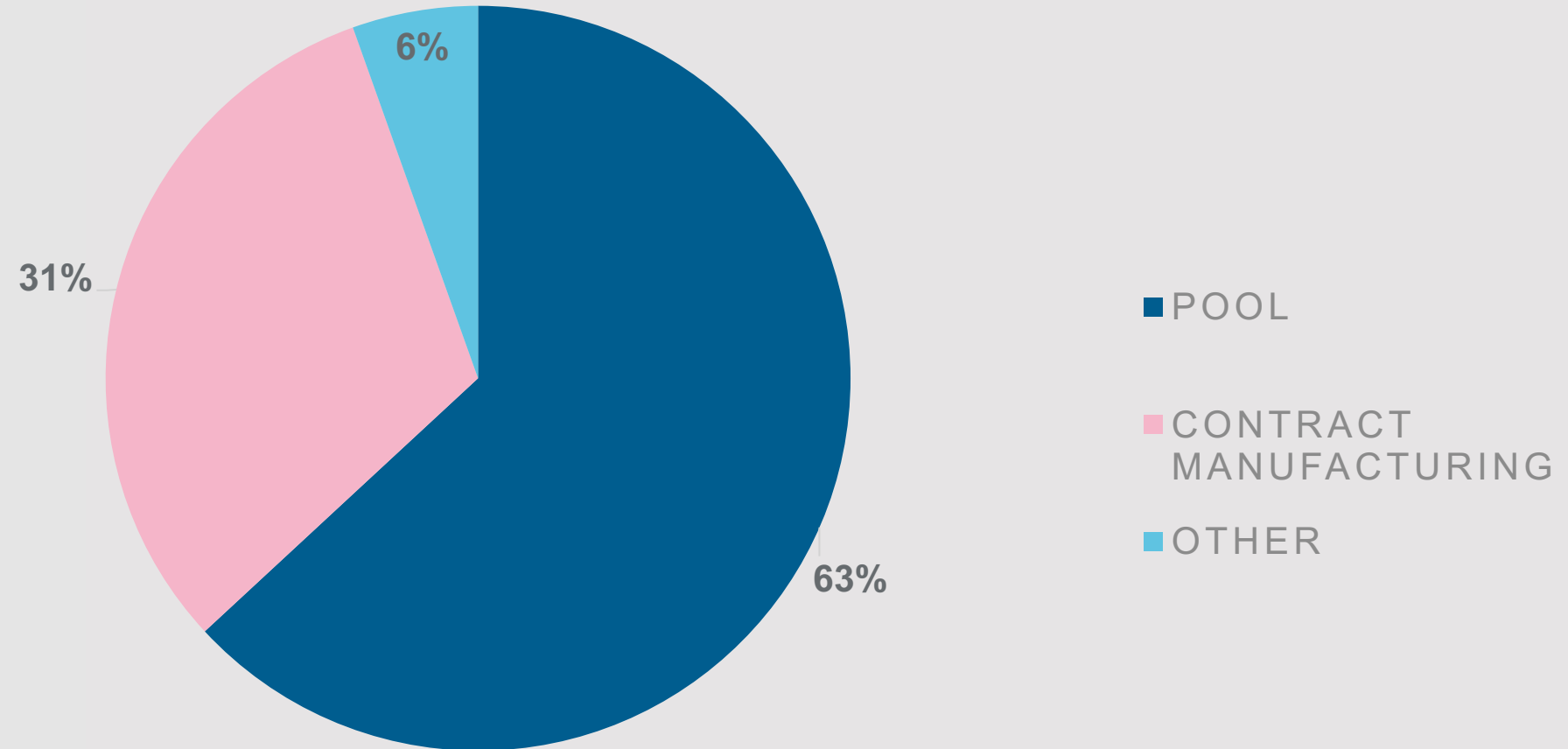


end production of oven  
2020

continuous development in the field  
of pool & contract manufacturing

# OVERVIEW

Interesting and diversified combination of different areas, which makes us more flexible and much less dependent on seasonal fluctuations.





**WHY**  
**GASSNER ?**  
— EDELSTAHLPOOLS —

Technical details- USP





## pool installation - self carrying construction

- ✓ no retaining walls and thus no breakthroughs (interfaces) for built-in parts
- ✓ self-supporting construction on a base plate that is one meter larger all around

basin fully insulated with 6 cm (standard) - floor and walls



## pool installation - lining a concrete tub

- ✓ static stiffening of the walls in spite of the concrete tank, but the load is then taken off the wall.
- ✓ insulation sits directly on the basin and is glued, hardly any condensate is formed
- ✓ particularly beautiful evenness of the side walls due to this method of construction



## skimmer pool

- ✓ no built-in skimmer (therefore fixed welded and permanently tight)
- ✓ unique high water level of approx. 5 cm (waterline to top edge)  
Skimmer top edge minus 35 mm - depending on pool head and floor covering
- ✓ skimmer basket removable from water side
- ✓ skimmer with width 235 mm or 400 mm





## overflow basin

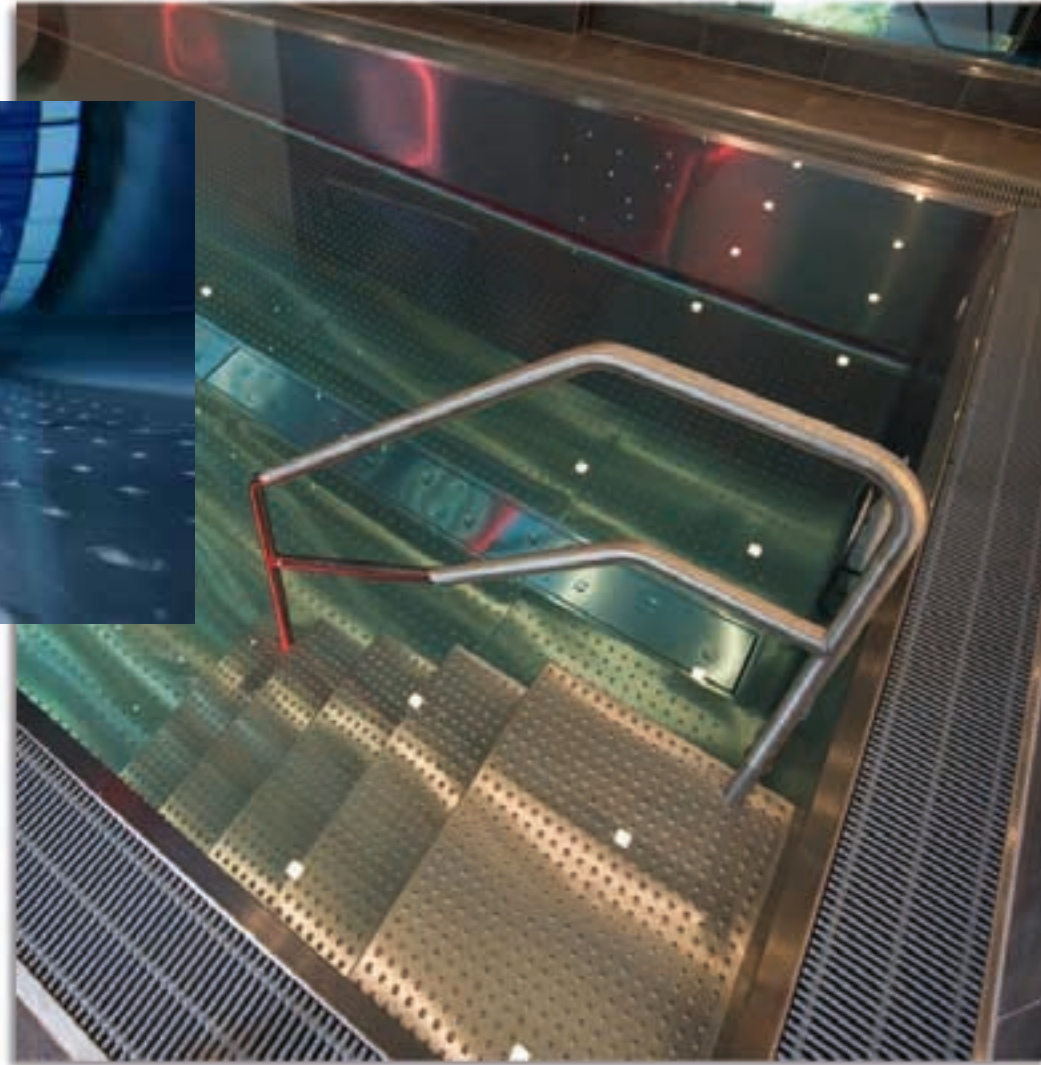
- ✓ specially developed adjustment system of the overflow edge by means of stainless steel threaded rods (approx. every 50 - 60 cm).
- ✓ a regular overflow on all sides is the requirement for pools like this.
- ✓ for overflow basins, a level protocol from an external land surveyors is included for end customers.





## burling

- ✓ burling the pool floor is adjusted to the shape of the pool.
- ✓ the result is to have always the same distance to walls and stairs
- ✓ all floor elements are burlled (standard) - more beautiful appearance, smaller scratches and floor welds are lost
- ✓ burls admit the standard and ensure optimal anti-slide-safety



## round transition

- ✓ The round transition between wall and floor makes it nearly impossible that dirt or debris stay.
- ✓ 100% cleaning of the transition is supported through the smaller distance to the edge for your pool robot.





corner stairs



self-carrying stairs (max. width 60 cm)



stairs straight with pedestal



public stairs (with step marking and handrail)



stairs and bench (as pool-cover niche)



custom made stairs (for countercurrent unit)

# GASSNER

— EDELSTAHLPOOLS —

## examples for stairs

- ✓ flexible and individual
- ✓ possible in combination as pool-cover niche



## pool „head“

### skimmerpool



slant



round

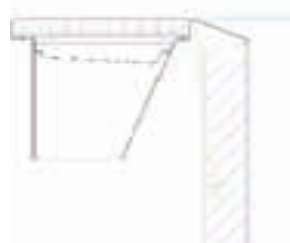


wave reflection



straight

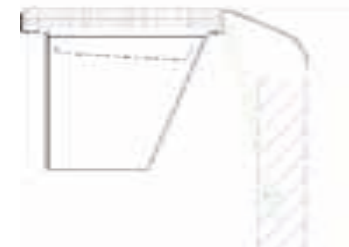
### overflow basin



slant



slant with  
grip edge



round

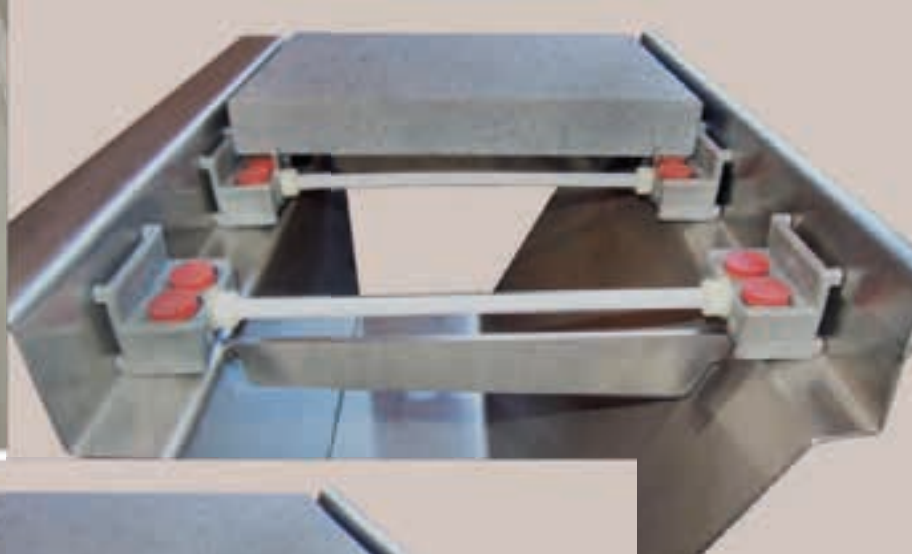
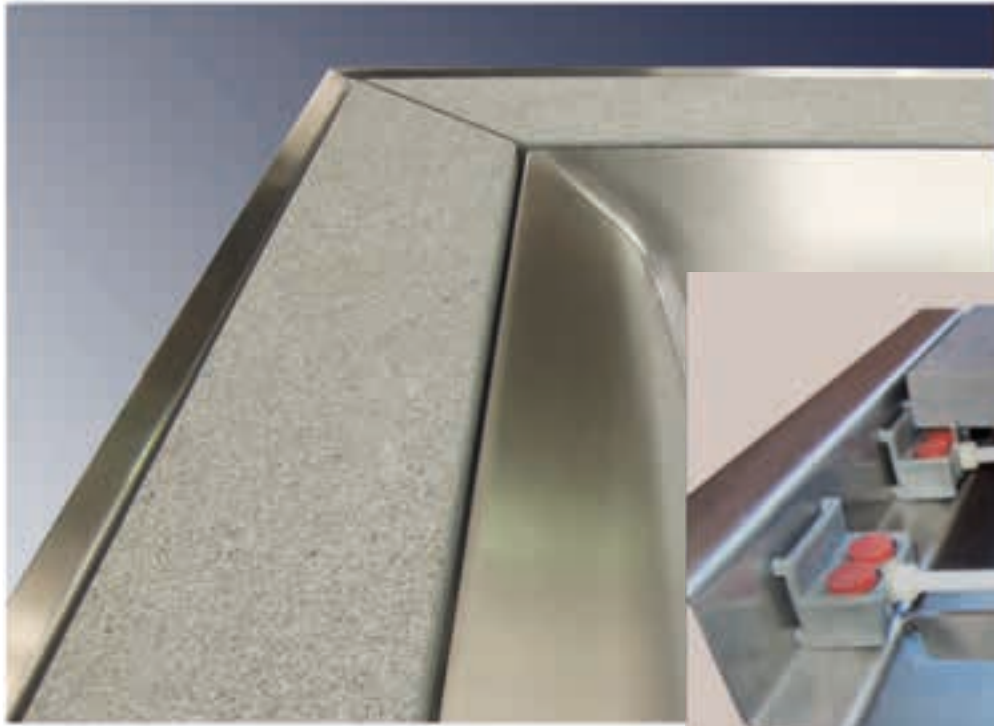


infinity

- ✓ individual - even with skimmer!!!
- ✓ flexible connection to the adjacent floor

## overflow channel with stone cover

- ✓ flexible and individual
- ✓ only minimal point contact with the stainless steel
- ✓ easily removable for cleaning the channel
- ✓ spacer for constant, even spacing



## foldable bench as pool-cover niche

**GASSNER**  
— EDELSTAHLPOOLS —

- ✓ easy and revisable even under water (2 locking screws)
- ✓ metal covers without visible screws (except in combination with air bubble bench)
- ✓ metal covers can be easily removed when the seat is folded up







# GASSNER

— EDELSTAHPOLS —

## wall mounted parts

✓ sunk placed

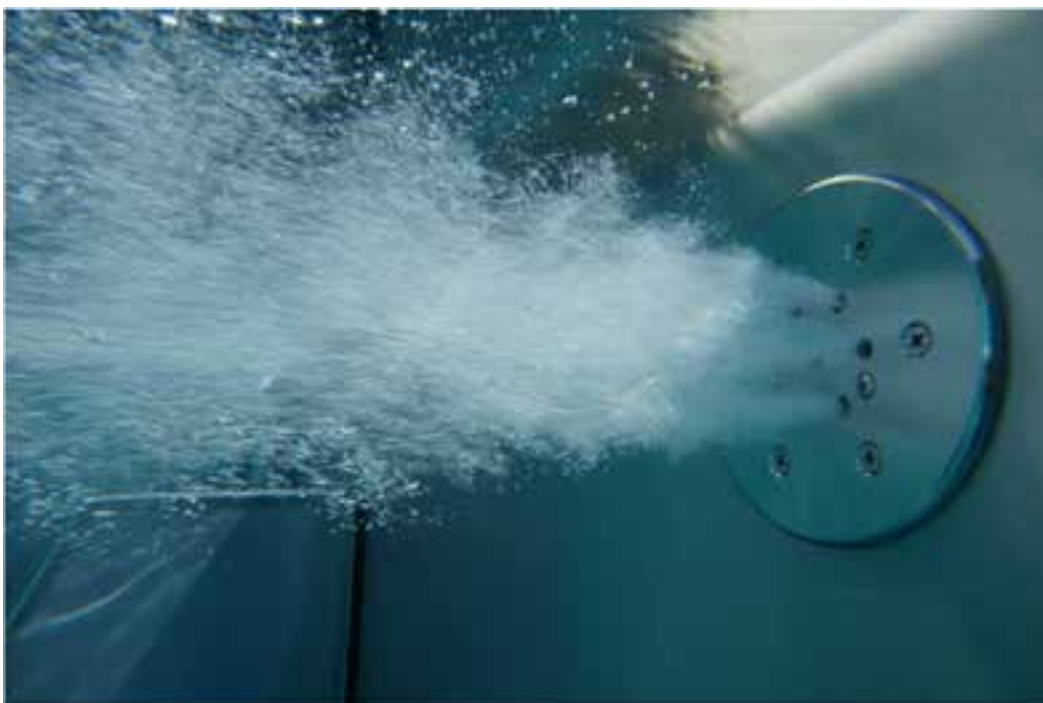
✓ shapely

# attractions

- ✓ customized
- ✓ with air and water
- ✓ for a feel well oasis



**GASSNER**  
— EDELSTAHPOLS —





SEE THE  
DIFFERENCE?





# GASSNER

— EDELSTAHPOLS —



- ✓ very high water level (skimmer pool)
- ✓ skimmer basket removable to the water side
- ✓ no inspection opening outside the pool
- ✓ different edge designs also for skimmer pools

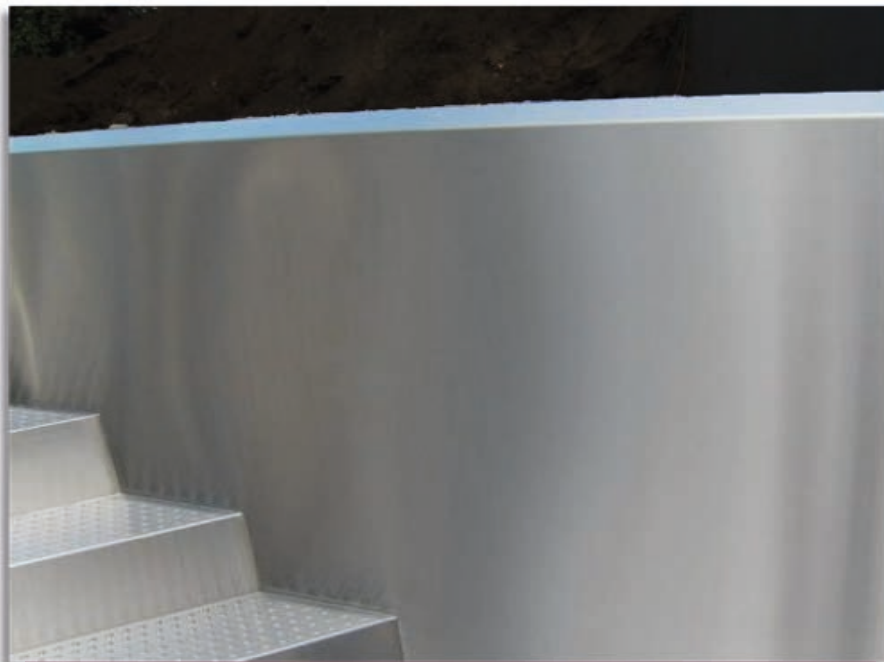
# others

# GASSNER

— EDELSTAHPOLS —



- ✗ very low water level due to built-in skimmers
- ✗ inspection opening outside the pool
- ✗ pool head only with 90° edging for skimmer basins



- ✓ side walls almost without visible welding points through thoughtful assembly technology
- ✓ sidewall and floor elements are glued with XPS insulation panels (max. flatness).
- ✓ insulated walls & floor with 60mm XPS (standard)



- ✗ no radius between floor and wall
- ✗ inside welding spots visible as light spots

## others



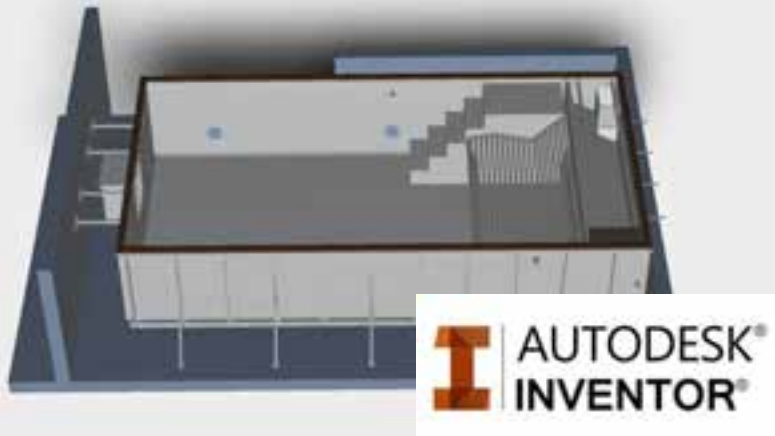
- ✗ use of prefabricated burl metal sheets
- ✗ no pre-brushed material
- ✗ partially cut burls
- ✗ no regular distances between burls and wall
- ✗ sloppy welding





## INNOVATION

State-of-the-art technology and continuous development with a highly motivated, solution-oriented team finds the optimal solution in the implementation even in difficult conditions





## POOL SYSTEM

---

Benefit from years of  
experience in the  
interaction of

*stainless steel pools &  
swimming pool  
technology*

for *private* as well as  
*commercial* facilities







## POOLCOVER

---

As a full-range supplier, pool covers are of course also part of our portfolio. Whether you need a floating cover, an enclosure or a winter cover - we have the solution.





## COVREX by Rehau

- ✓ a foamed PVC profile
- ✓ tongue and groove as well as connection made of PUR (firmly connected by extrusion process)
- ✓ sophisticated design
- ✓ outstanding material properties
- ✓ incomparably easy to clean



**GASSNER**  
- POOLABDECKUNGEN -

- foamed profiles, no hollows and endcaps
  - weather resistant, therefore year-round usable (-20° to +70° C)
  - very high hail resistance
  - suitable for unusual pool shapes
  - excellent insulation properties
- 
- closed, easy to clean surface
  - high storm & child safety in connection with patented PROTECTION SYSTEM
  - individual cutting of the profiles during installation on site
  - savings of pool chemicals and heating costs of up to 80%

## protection system

- ✓ two plastic half-shells form fit screwed in the profile
- ✓ same colors like profiles "COVREX by Rehau"
- ✓ straps including ground anchor
- ✓ profiles swim rigidly on the water
- ✓ high child and storm safety
- ✓ patent registered

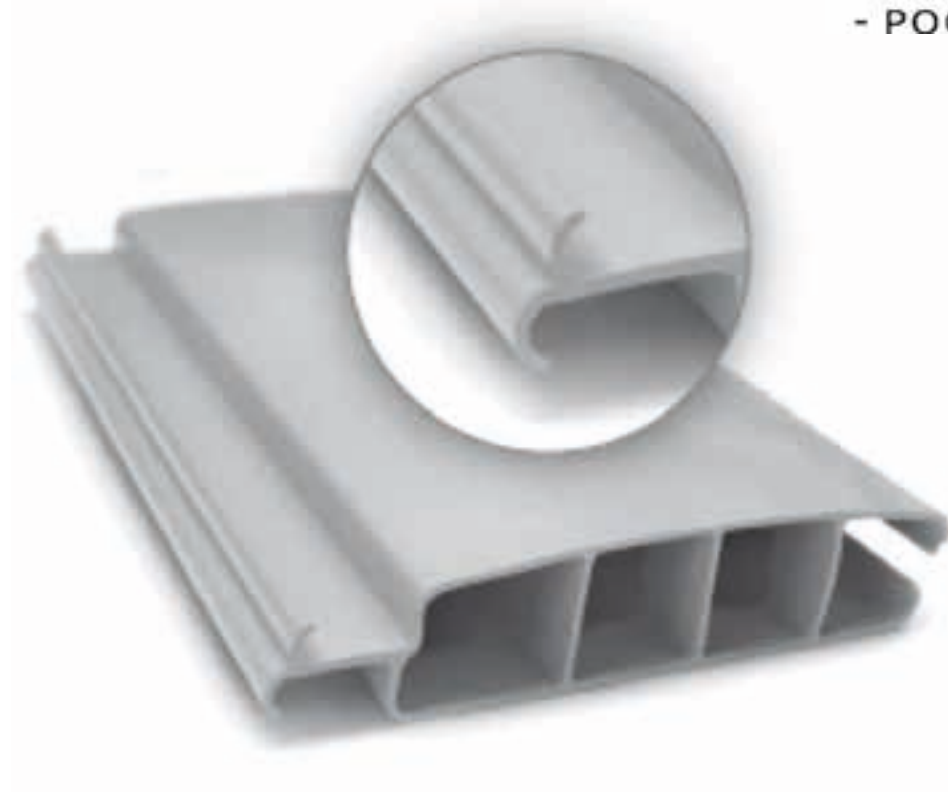


Unique child safety in connection with  
patented PROTECTION SYSTEM  
and integrated handrail inside the tub

## **hollow profiles out of PVC and PC**

The hollow profiles out of PVC or polycarbonate (PC) are distinguished irrespective of the material from the sophisticated design.

The production of each individual slat is done in extrusion process.



Each slat with dimensions of 60 x 14 mm has three hollow chambers and is provided with a double hook system, which locks from slat to slat, resulting in a solid pool cover.





## PVC hollow profiles

- ✓ cost-effective alternative to "Covrex by Rehau" or hollow profiles out of PC
- ✓ proven system for decades
- ✓ possible colors: solar, transparent, white, gray, ivory, light blue, dark blue
- ✓ special colors on request

## PC hollow profiles

- ✓ extraordinary impact-proof
- ✓ temperature resistant up to 120°C
- ✓ largely hail resistant to particle size of 30 mm
- ✓ Possible colors: solar, transparent, light blue-transparent, dark blue-transparent, green-transparent, silver-transparent, silver/solar



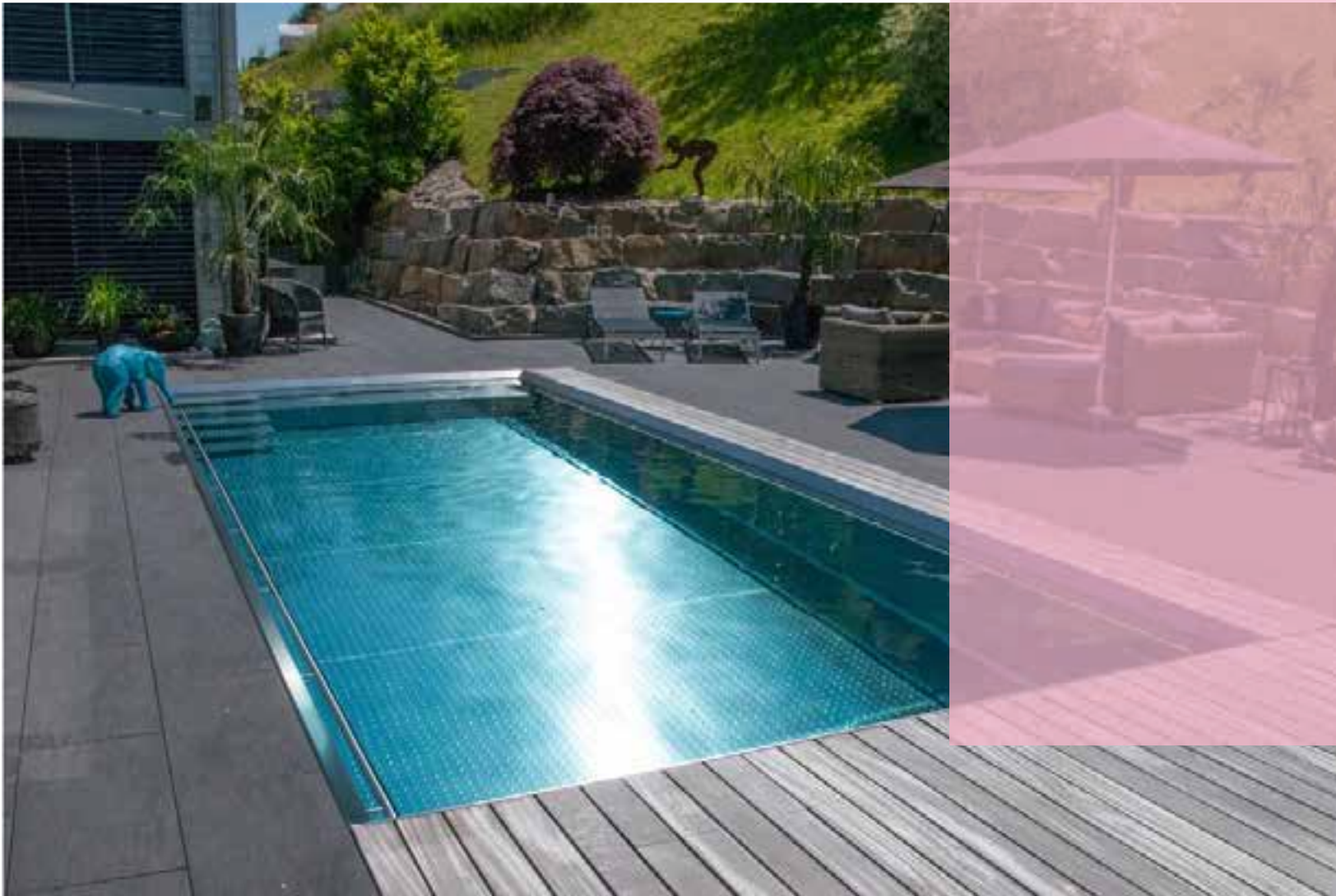
**GASSNER**  
- POOLABDECKUNGEN -

## references hollow profiles





## safety handrails



Maximum safety for pool covers through the installation of integrated handrails. This means that the cover profiles can only dive down until the level of the handrails. The load capacity depends on the chosen profile.



# pool enclosures

**GASSNER**  
- POOLABDECKUNGEN -



# TRANSPORTATION IN ONE PIECE

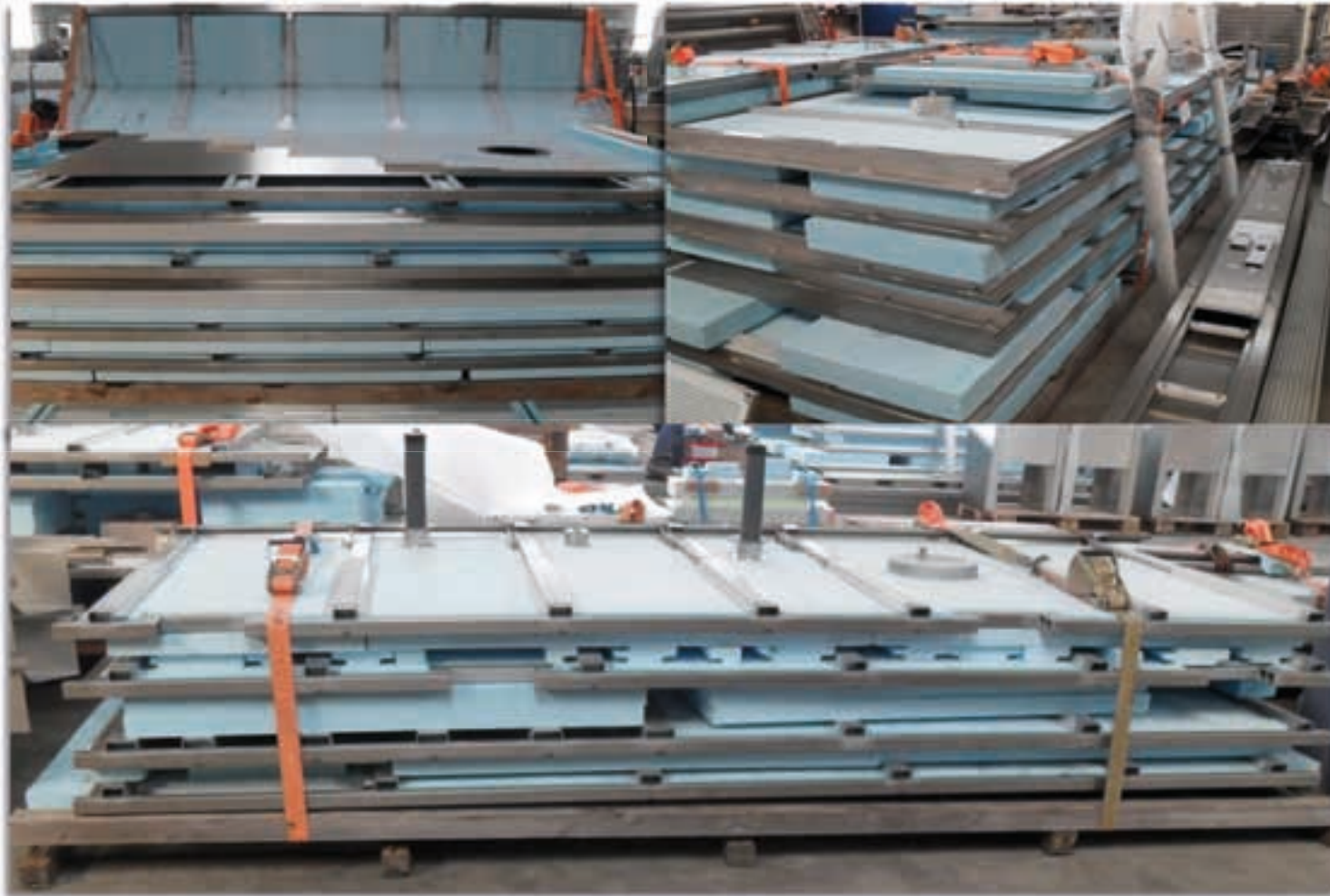


**GASSNER**  
— EDELSTAHLPOOLS —

- ✓ skimmer pools up to a max. internal width of 3.4 m
- ✓ fast assembly on site (1-2 working days)



## TRANSPORTATION IN PARTS



- ✓ extremely high degree of pre-fabrication (unscored at the market)
- ✓ tailored to the situation on site

# public references

**GASSNER**  
— EDELSTAHPOLS —

Spas, sports facilities,  
hospitals, therapy  
centers, hotels, chalets  
and residential  
complexes.

We are your reliable  
partner





# Spa Mondorf

Mondorf-Les-Bains (Luxemburg)

**GASSNER**  
— EDELSTAHLPOOLS —





# Hotel Cortisen

St. Wolfgang am Wolfgangsee (Austria)

**GASSNER**  
— EDELSTAHLPOOLS —



# Hotel Tirol Ischgl (Austria)

**GASSNER**  
— EDELSTAHLPOOLS —





# Hotel Almhof

Nauders (Austria)

GASSNER  
— EDELSTAHLPOOLS —



realized together with Fankhauser Installationen



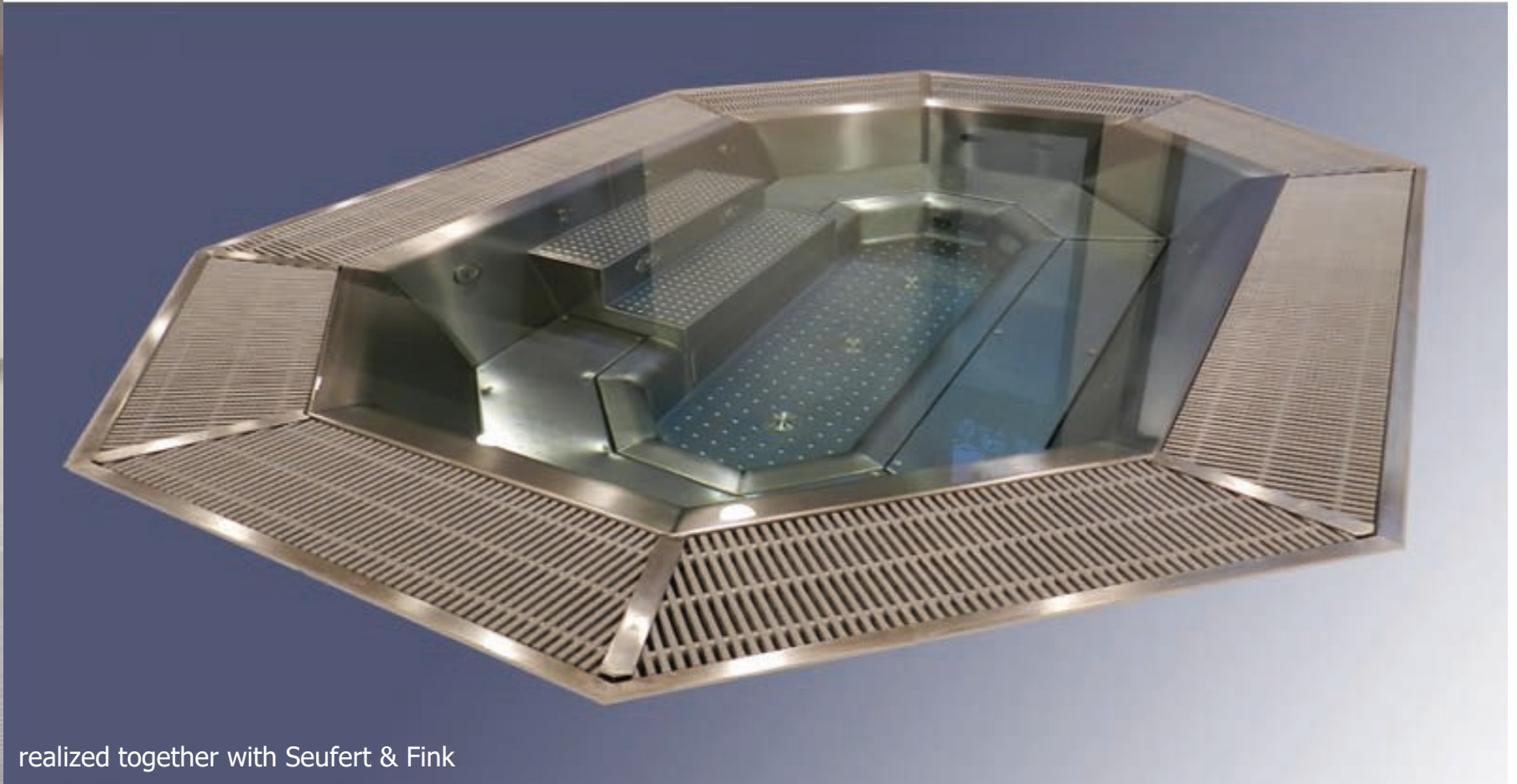
# Hotel Schwarzer Adler Kitzbühel (Austria)

**GASSNER**  
— EDELSTAHLPOOLS —



# FC Bayern Munich Munich (Germany)

**GASSNER**  
— EDELSTAHPOLS —



realized together with Seufert & Fink

# FC Bayern Campus Munich (Germany)

**GASSNER**  
— EDELSTAHLPOOLS —



realized together with Pool & Wellness Ettl



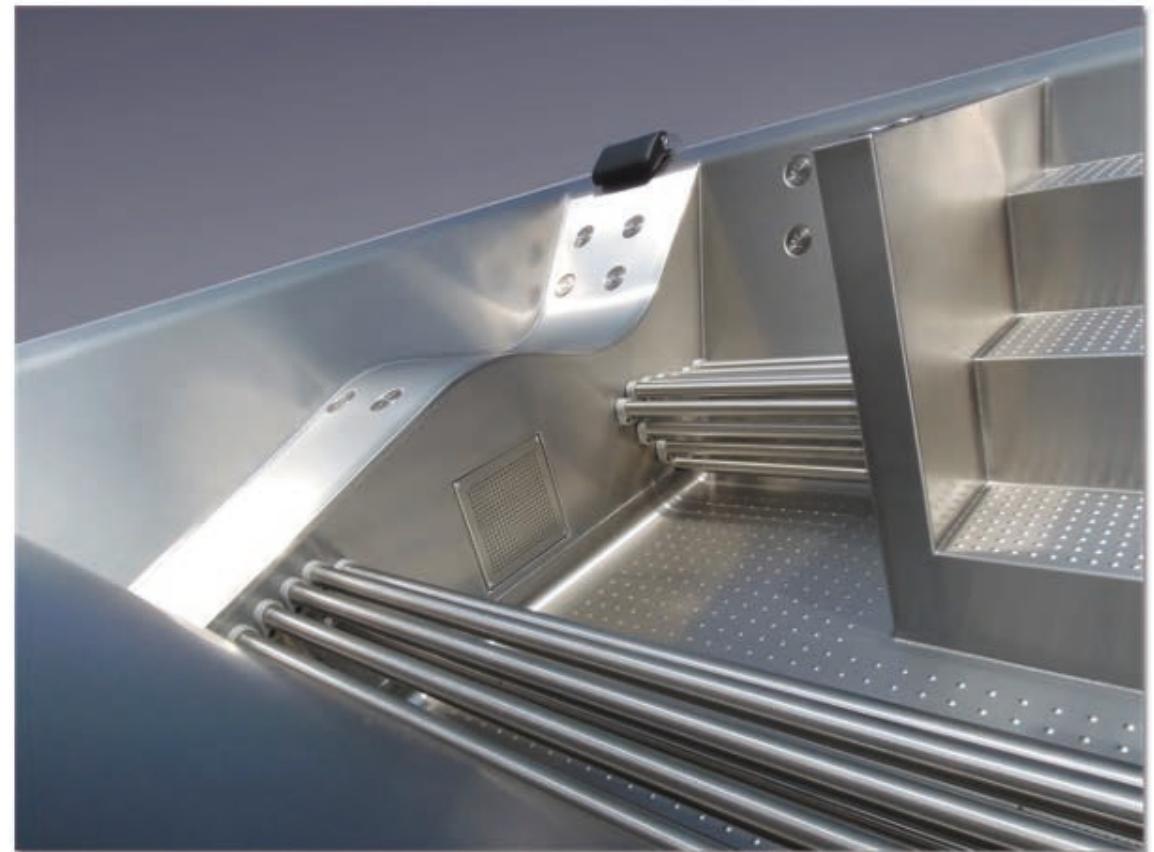
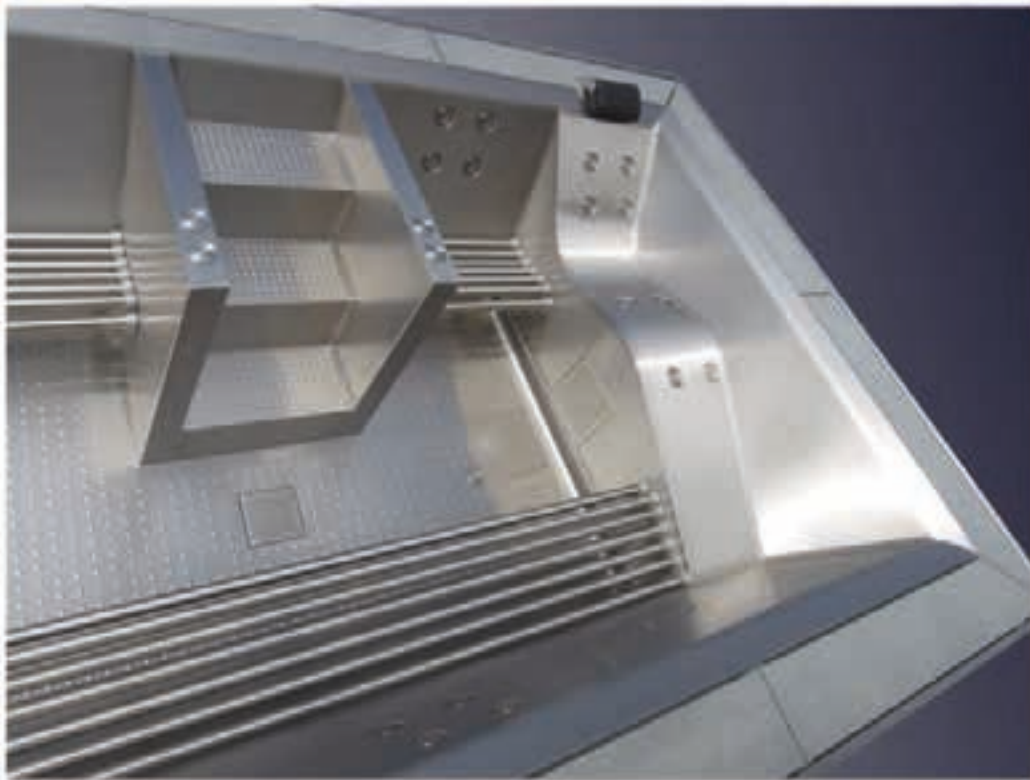
# Hotel Enichlmayr Ohlsdorf (Austria)

**GASSNER**  
— EDELSTAHLPOOLS —



# Hotel Winzer Kogl (Austria)

**GASSNER**  
— EDELSTAHLPOOLS —





# The Grand - Apartments Kitzbühel (Austria)

**GASSNER**  
— EDELSTAHLPOOLS —



realized together with Hagleitner Installationen



# Hotel Lorünser Zürs am Arlberg (Austria)

**GASSNER**  
— EDELSTAHLPOOLS —



# Hacienda Resort Santo Domingo (Dominican Republic)

**GASSNER**  
— EDELSTAHLPOOLS —

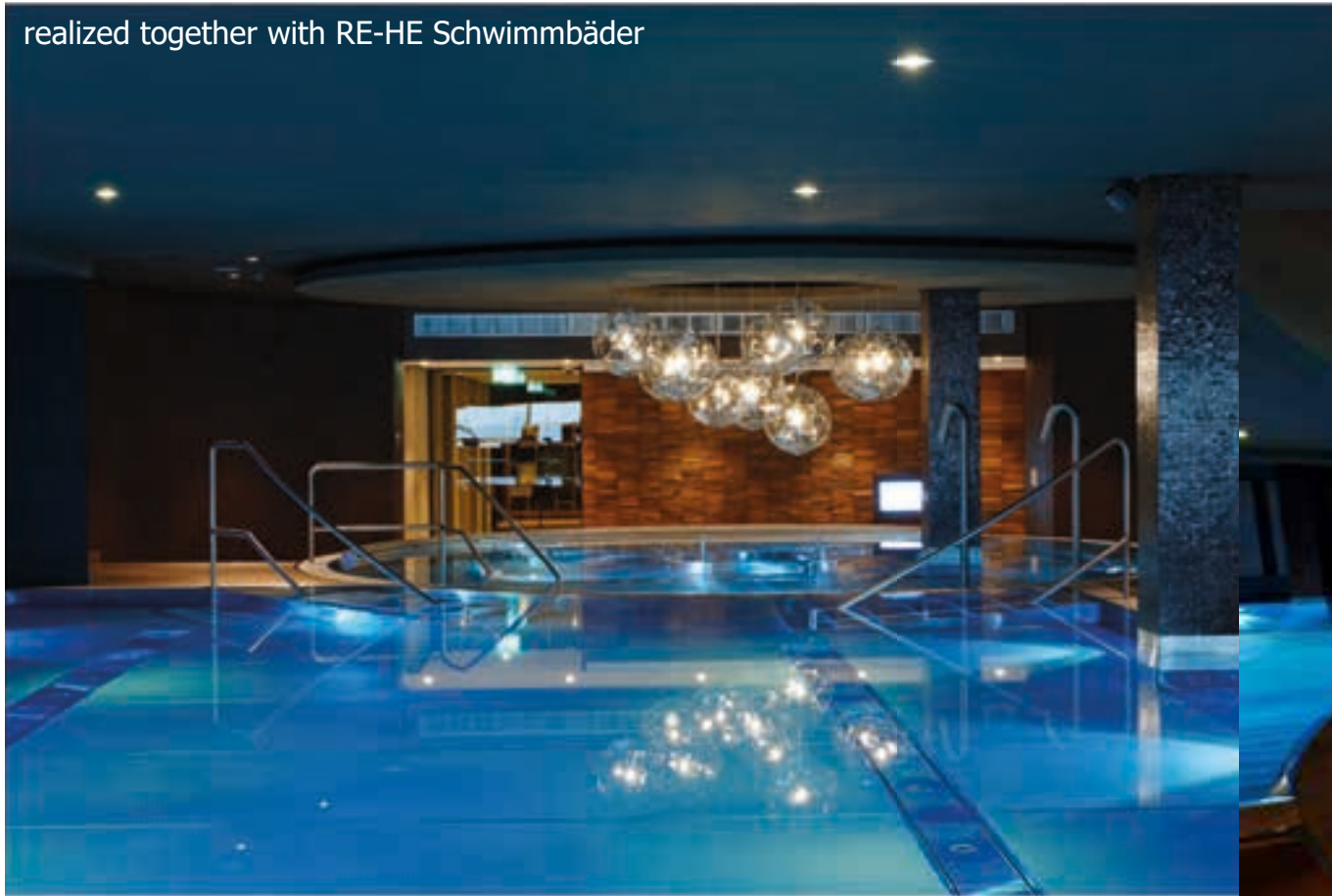




# Elements Munich (Germany)

GASSNER  
— EDELSTAHPOLS —

realized together with RE-HE Schwimmbäder





# Hotel Breisach

Breisach (Germany)

**GASSNER**  
— EDELSTAHPOLS —

realized together with Herzog Schwimmbäder



# Hotel Ritzenhof Saalfelden (Austria)

**GASSNER**  
— EDELSTAHLPOOLS —





# Hotel Ultima Gstaad (Switzerland)



realized together with LeaderSPA

**GASSNER**  
— EDELSTAHLPOOLS —





# privat references

**GASSNER**  
— EDELSTAHPOLS —

You plan your  
private oasis for  
recreation and  
fun for the whole  
family.

**skimmer or overflow**

We are your reliable  
partner



# House O. Steyr (Austria)

GASSNER  
— EDELSTAHPOLS —





# House S. Neuhofen an der Krems (Austria)

GASSNER  
— EDELSTAHPOLS —



# House H. Wallern (Austria)

**GASSNER**  
— EDELSTAHLPOOLS —



Haas Architektur/Szabados



# House I. Wolfen (Austria)

**GASSNER**  
— EDELSTAHPOLS —



# House K. Lichtenberg (Austria)

**GASSNER**  
— EDELSTAHLPOOLS —





# House P. Geneva (Switzerland)

**GASSNER**  
— EDELSTAHPOLS —



realized together with LeaderSPA

# House H. Schwertberg (Austria)

**GASSNER**  
— EDELSTAHLPOOLS —





# Show garden Ermensee (Switzerland)

**GASSNER**  
— EDELSTAHPOLS —



realized for Vita Bad AG



# Penthouse S. Vienna (Austria)

**GASSNER**  
— EDELSTAHLPOOLS —





# Villa K. Malaga (Spain)

**GASSNER**  
— EDELSTAHLPOOLS —



realized together with Pool Aesthetics

# House H. Tiefenfucha (Austria)

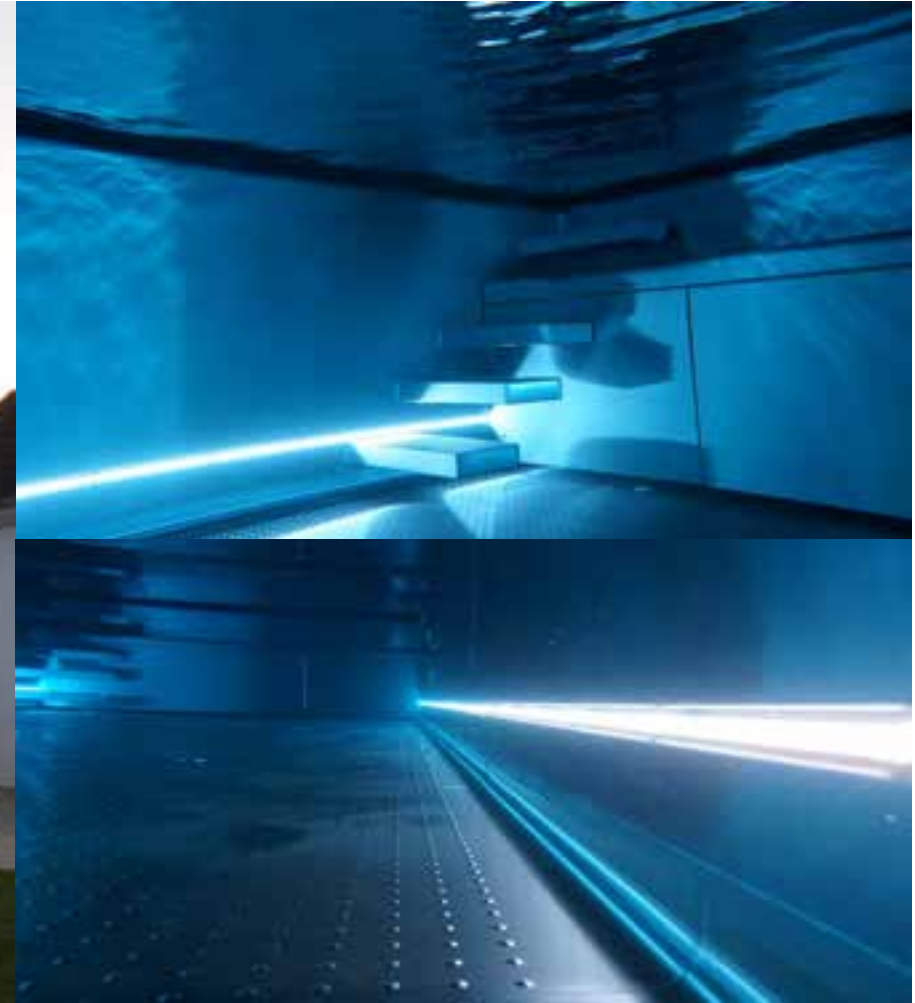
GASSNER  
— EDELSTAHLPOOLS —





# Villa Ö. Enns (Austria)

GASSNER  
— EDELSTAHLPOOLS —



# Villa T. Saragossa (Spain)

GASSNER  
— EDELSTAHLPOOLS —



realized together with Pool Aesthetics



# House E. Linz (Austria)

**GASSNER**  
— EDELSTAHLPOOLS —





# House B. Wiener Neustadt (Austria)

**GASSNER**  
— EDELSTAHLPOOLS —





# House H. Vienna (Austria)

GASSNER  
— EDELSTAHLPOOLS —





# Villa L. Eppan (Italy)

**GASSNER**  
— EDELSTAHLPOOLS —

realized together with Pro Wellness





# House F. Nöchling (Austria)

**GASSNER**  
— EDELSTAHPOLS —



# House G. Sierning (Upper Austria)

**GASSNER**  
— EDELSTAHLPOOLS —







## DIGITAL

Follow us online

edelstahl-pool.at